

Datasheet for ABIN108606

## anti-PSMD14 antibody

3 Images

3 Publications



[Go to Product page](#)

### Overview

Quantity:	0.1 mL
Target:	PSMD14
Reactivity:	Human
Host:	Mouse
Clonality:	Monoclonal
Conjugate:	This PSMD14 antibody is un-conjugated
Application:	Immunofluorescence (IF), Immunoprecipitation (IP), Immunocytochemistry (ICC), Flow Cytometry (FACS)

### Product Details

Immunogen:	Recombinant full length Mad1 protein (human)
Clone:	9B10
Isotype:	IgG2b
Purification:	Protein A

### Target Details

Target:	PSMD14
Alternative Name:	Mad1 ( <a href="#">PSMD14 Products</a> )
Background:	Synonyms: hMAD1 antibody,HsMAD1 antibody,MAD-1 antibody,MAD1L1 antibody,Mitotic arrest deficient 1antibody,Mitotic checkpoint MAD1 protein homolog antibody,Mitotic spindle assembly

## Target Details

	checkpoint protein MAD1antibody,PIG-9 antibody,PIG9 antibody,Tax binding protein 181 antibody,TP53I9 antibody,Tumor protein p53inducible protein 9 antibody,TXBP181 antibody
Gene ID:	296137
OMIM:	602686
Pathways:	<a href="#">Mitotic G1-G1/S Phases</a> , <a href="#">DNA Replication</a> , <a href="#">M Phase</a> , <a href="#">Positive Regulation of Endopeptidase Activity</a> , <a href="#">Synthesis of DNA</a> , <a href="#">Ubiquitin Proteasome Pathway</a>

## Application Details

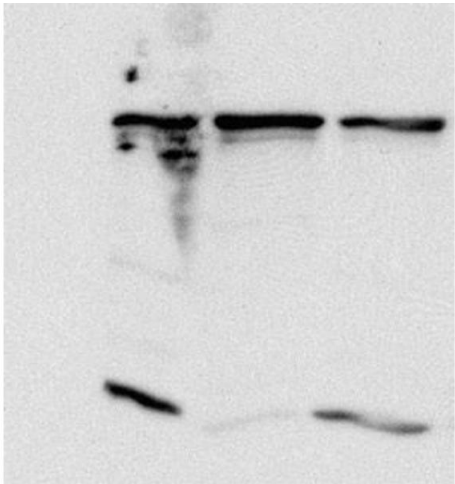
Application Notes:	Optimal antibody dilution should be determined by titration, however as a guideline try, IF: 1/500 - 1/1000. IP: Use at a concentration of 5 µg/0.5 - 1 mL of extract.
Restrictions:	For Research Use only

## Handling

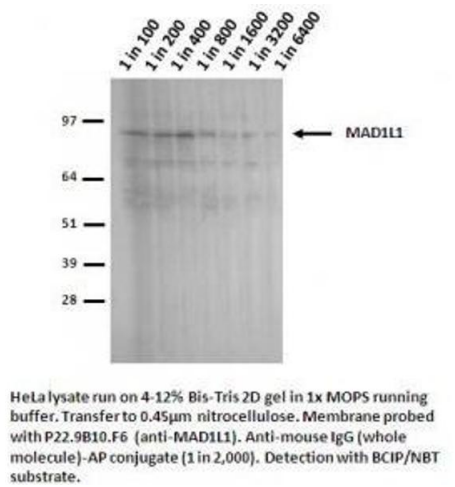
Format:	Liquid
Concentration:	0.9 mg/mL
Buffer:	Purified antibody containing PBS 0.1 % sodium azide
Preservative:	Sodium azide
Precaution of Use:	This product contains Sodium azide: a POISONOUS AND HAZARDOUS SUBSTANCE which should be handled by trained staff only.

## Publications

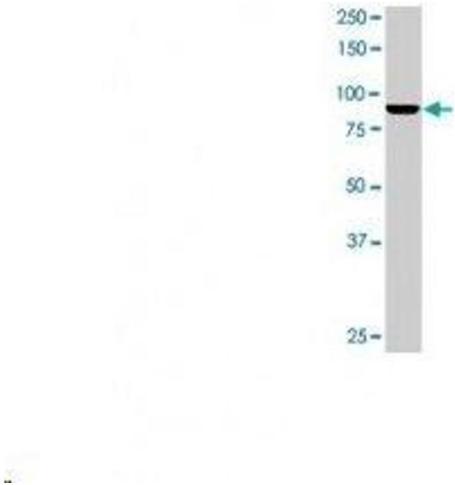
Product cited in:	Hawryluk-Gara, Shibuya, Wozniak: "Vertebrate Nup53 interacts with the nuclear lamina and is required for the assembly of a Nup93-containing complex." in: <b>Molecular biology of the cell</b> , Vol. 16, Issue 5, pp. 2382-94, (2005) ( <a href="#">PubMed</a> ).
-------------------	--



**Image 1.** HeLa lysates were incubated with Anti-MAD1L1 (clone 9B10) and the immunocomplex precipitated with protein G coupled beads. The post-ip supernatant (lane 3), the immunoprecipitate (lane 2) and whole cell extract (lane 1) was transferred to membrane and probed with rabbit anti-Mad1



**Image 2.**



**Image 3.**