

Datasheet for ABIN108636

**anti-serine (Or Cysteine) Peptidase Inhibitor, Clade A, Member 3G (Serpina3g) (AA 406-426) antibody**[Go to Product page](#)**2** Images**1** Publication

## Overview

Quantity:	0.1 mL
Target:	serine (Or Cysteine) Peptidase Inhibitor, Clade A, Member 3G (Serpina3g)
Binding Specificity:	AA 406-426
Reactivity:	Mouse
Host:	Hamster
Clonality:	Monoclonal
Conjugate:	Un-conjugated
Application:	Western Blotting (WB), Immunohistochemistry (Paraffin-embedded Sections) (IHC (p))

## Product Details

Immunogen:	Synthetic peptide corresponding to Mouse Spi2A aa 406-426 (C terminal). Sequence: NPERSTNFPNGEGASSQRC
Sequence:	NPERSTNFPN GEGASSQRC
Clone:	MoFo292
Isotype:	IgG2b
Specificity:	Reacts with an epitope located in the region encoded by amino acids 406 - 426 including the C terminus of Spi2A
Purification:	Protein G

## Target Details

Target:	serine (Or Cysteine) Peptidase Inhibitor, Clade A, Member 3G (Serpina3g)
Alternative Name:	Spi2A ( <a href="#">Serpina3g Products</a> )
Background:	Synonyms: Spi2A antibody,Serine protease inhibitor 2A antibody,Serine protease inhibitorA3G antibody,Serpin 2A antibody,Serpin A3G antibody,Serpina3g antibody

## Application Details

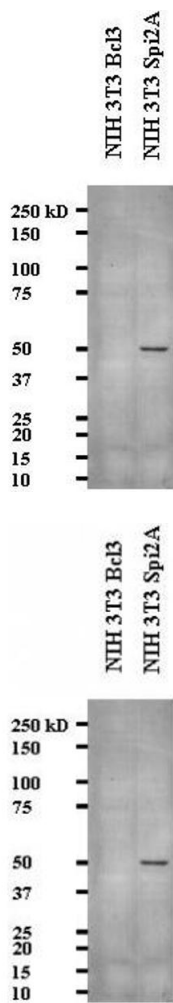
Application Notes:	Optimal antibody dilution should be determined by titration, however as a guideline try 1:1000
Comment:	Myeloma, fusion partners: SP2/0
Restrictions:	For Research Use only

## Handling

Format:	Liquid
Concentration:	1 mg/mL
Buffer:	Purified antibody containing PBS + 0.1 % sodium azide
Preservative:	Sodium azide
Precaution of Use:	This product contains Sodium azide: a POISONOUS AND HAZARDOUS SUBSTANCE which should be handled by trained staff only.

## Publications

Product cited in:	Mizukami, Kuramitsu, Takizawa, Momose, Masumi, Naito, Iwama, Ogawa, Noce, Hamaguchi, Yamaguchi: "Identification of transcripts commonly expressed in both hematopoietic and germ-line stem cells." in: <b>Stem cells and development</b> , Vol. 17, Issue 1, pp. 67-80, (2008) ( <a href="#">PubMed</a> ).
-------------------	--



Western Blotting

**Image 1.** Western blot showing Anti- Serine Protease Inhibitor 2A (Spi2A) on NIH3T3 cell lysate

**Image 2.**