

Datasheet for ABIN108720

anti-GZMK antibody

4 Images

[Go to Product page](#)

Overview

Quantity:	100 µg
Target:	GZMK
Reactivity:	Human
Host:	Mouse
Clonality:	Monoclonal
Conjugate:	This GZMK antibody is un-conjugated
Application:	ELISA, Flow Cytometry (FACS), Cell-ELISA (cELISA)

Product Details

Immunogen:	genetic immunisation with cDNA encoding human Granzyme K
Clone:	GM-24C3
Isotype:	IgG2b
Specificity:	The antibodies do not cross-react with the human granzymes A, B or M.
Purification:	Protein G

Target Details

Target:	GZMK
Alternative Name:	Granzyme K (GZMK Products)
Background:	Granzymes are exogenous serine proteases that are stored in the cytotoxic granules of activated T cells and NK cells. GM24C3 was generated by genetic immunisation and reacts

Target Details

with human granzyme K (GrK), a 28 kDa serine protease with trypsin-like specificity.

UniProt: [P49863](#)

Application Details

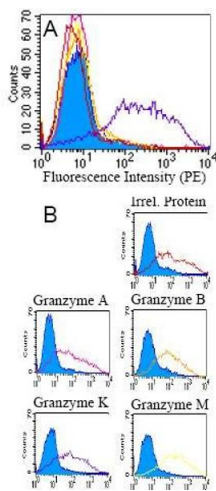
Application Notes: Flow cytometry: 1.2 µg/10⁶ cells
ELISA: 1:200 - 1:400
CELISA: 1:200 - 1:400
For each application a titration should be performed to determine the optimal concentration.

Restrictions: For Research Use only

Handling

Buffer: PBS, pH 7.2
Handling Advice: Avoid repeated freezing and thawing.
Storage: 4 °C
Storage Comment: short term: 2 °C - 8 °C, long term: -20 °C

Images



Flow Cytometry

Image 1. Specificity testing of GM24C3, GM26E7 and GM6C3. BOSC cells were transiently transfected with expression vectors for granzyme A, B, K and M as well as an irrelevant protein. Expression of the constructs was tested with an anti-tag mono-clonal antibody (B)

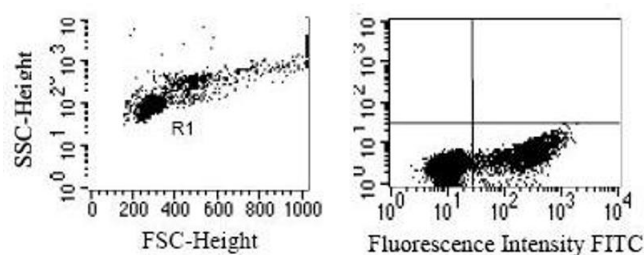
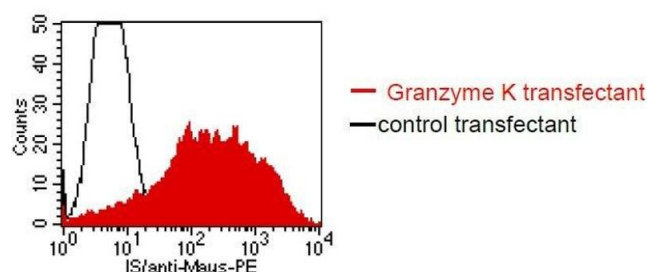


Image 2. Intracellular detection of granzyme K in human PBMC. Mononuclear cells from peripheral blood (PBMC) were separated by Ficoll-Hypaque, fixed and permeabilised. Cells were incubated with hybridoma supernatant of GM24C3, GM26E7 or GM6C3 for 30 minutes. Bound anti



Flow Cytometry

Image 3. FACS analysis of BOSC23 cells using C3. BOSC23 cells were transiently transfected with an expression vector encoding either Granzyme K (red curve) or an irrelevant protein (control transfectant: black curve). Binding of C3 was detected with a PE-conjugated secondary antibody. A positive signal was obtained only with

Please check the [product details page](#) for more images. Overall 4 images are available for ABIN108720.