

Datasheet for ABIN108725
anti-CEACAM1 antibody

6 Images

[Go to Product page](#)

Overview

Quantity:	100 µg
Target:	CEACAM1
Reactivity:	Human
Host:	Mouse
Clonality:	Monoclonal
Conjugate:	This CEACAM1 antibody is un-conjugated
Application:	Flow Cytometry (FACS), Immunohistochemistry (Frozen Sections) (IHC (fro)), Cell-ELISA (cELISA)

Product Details

Immunogen:	genetic immunisation with cDNA encoding the extracellular region of human CEACAM1-A2
Clone:	GM-8G5
Isotype:	IgG1
Specificity:	GM8G5 recognises CEACAM1 transiently expressed on the cell surface of transfected BOSC cells as well as the naturally expressed protein (Fig. 2, kindly provided by Dr. R. Riesenberg, Labor für Tumورimmunologie, Urologische Klinik, Klinikum Grossh
Purification:	Protein G

Target Details

Target:	CEACAM1
Alternative Name:	CEACAM1 (CEACAM1 Products)

Target Details

Background: CEACAM1 (BGP) belongs to the carcinoembryonic antigen (CEA) gene family. CEACAM1 expression is downregulated in many tumors indicating a tumor-suppressive function. GM8G5 was generated by genetic immunisation and can be used to distinguish CEACAM1 from all other CEACAMs.

UniProt: [P13688](#)

Application Details

Application Notes: Flow cytometry: 1.2 µg/10⁶ cells
CELISA: 1:200 - 1:400
ELISA: 1:200 - 1:400
Immunohistology: 10 µg/mL (on cryosections)
For each application a titration should be performed to determine the optimal concentration.

Comment: Synonyms: CD66a, BGP, biliary glycoprotein I

Restrictions: For Research Use only

Handling

Buffer: PBS, pH 7.2

Handling Advice: Avoid repeated freezing and thawing.

Storage: 4 °C

Storage Comment: short term: 2 °C - 8 °C, long term: -20 °C

Images

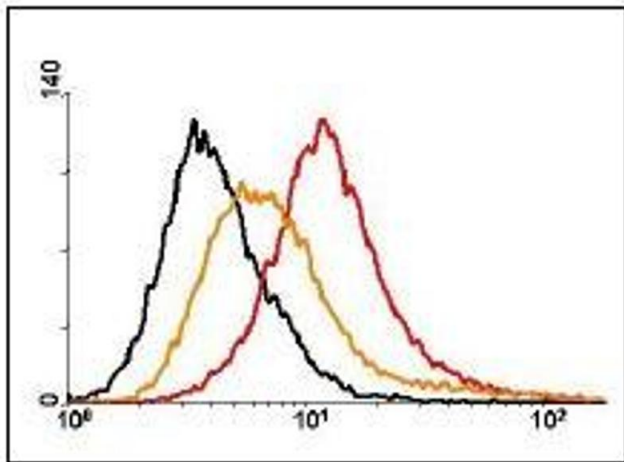
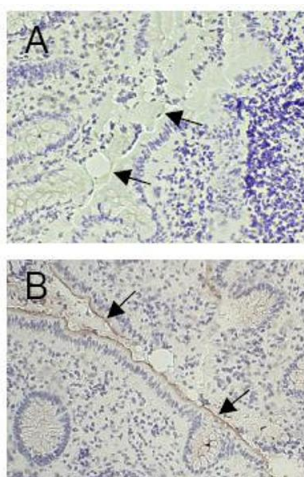


Image 1. GM8G5 on renal cell carcinoma (RCC). Hybridoma supernatant of GM8G5 recognises CEACAM1 expressed on the surface of native RCC (orange curve) and on RCC stimulated with IFN-gamma (red curve). PBS served as negative control (black curve)



Immunohistochemistry

Image 2. Immunohistological staining of colon tissue with GM8G5. Cryosections of colon tissue were stained with 10 ug/ml GM8G5 diluted in PBS containing 2.5% horse serum (B). PBS 2.5% horse serum served as negative control (A). Arrows indicate representative sect

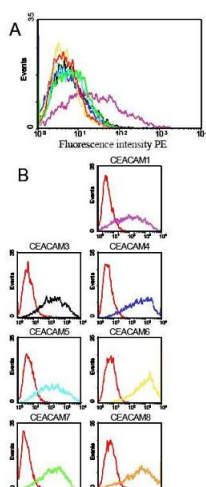


Image 3. Specificity testing of GM8G5. BOSC cells were transiently transfected with expression vectors containing the cDNA of either CEACAM1, 3, 4, 5, 6, 7 or 8. Expression of the constructs was tested with monoclonal antibodies known to recognise the correspondi

Please check the [product details page](#) for more images. Overall 6 images are available for ABIN108725.