

Datasheet for ABIN108730  
**anti-CEACAM5/6 antibody**

## 5 Images

[Go to Product page](#)

## Overview

Quantity:	100 µg
Target:	CEACAM5/6
Reactivity:	Human
Host:	Mouse
Clonality:	Monoclonal
Conjugate:	This CEACAM5/6 antibody is un-conjugated
Application:	Flow Cytometry (FACS), Immunohistochemistry (Frozen Sections) (IHC (fro)), Western Blotting (WB), Cell-ELISA (cELISA), ELISA

## Product Details

Immunogen:	immunisation with extracted protein of CEACAM5
Clone:	MUS
Isotype:	IgG1
Specificity:	Anti-human CEACAM1,3,4,5,6 (CD66a,c,d,e,CGM7)
Purification:	Protein G

## Target Details

Target:	CEACAM5/6
Alternative Name:	CEACAM5,6 ( <a href="#">CEACAM5/6 Products</a> )
Background:	MUS was generated by immunisation with CEA partially purified from a perchloric acid extract

## Target Details

from liver metastases of colonic tumors. MUS reacts specifically with the well known tumor markers CEACAM5 (CEA/CD66e) and CEACAM6 (NCA/CD66c).

UniProt: [P06731](#), [P40199](#)

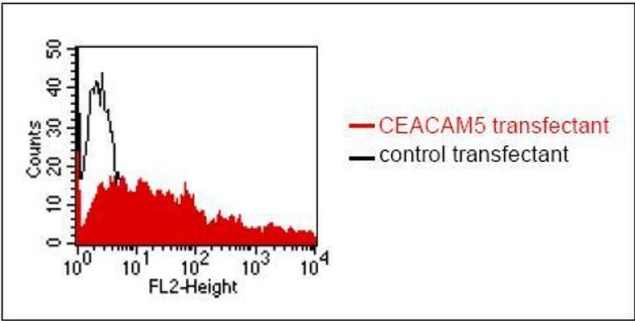
## Application Details

Application Notes:	Flow cytometry: 1.2 µg/10 <sup>6</sup> cells ELISA: 1:200 - 1:400 CELISA: 1:200 Western blot: 4 µg/mL Immunohistology: 1-2 µg/10 <sup>6</sup> cells (on cryosections) For each application a titration should be performed to determine the optimal concentration.
Comment:	Synonyms: CEA, NCA, CD66ce
Restrictions:	For Research Use only

## Handling

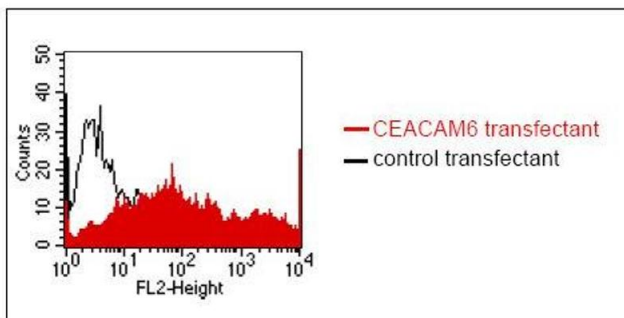
Concentration:	1 mg/mL
Buffer:	PBS, pH 7.2
Handling Advice:	Avoid repeated freezing and thawing.
Storage:	4 °C
Storage Comment:	short term: 2 °C - 8 °C, long term: -20 °C

## Images



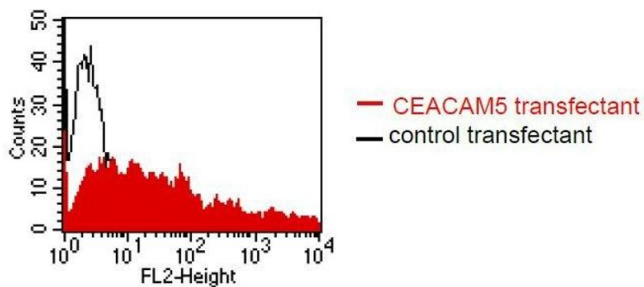
### Flow Cytometry

**Image 1.** FACS analysis of BOSC23 cells using MUS. BOSC23 cells were transiently transfected with an expression vector encoding either CEACAM5 (red curve) or an irrelevant protein (control transfectant). Binding of MUS was detected with a PE conjugated secondary ant



### Flow Cytometry

**Image 2.** FACS analysis of BOSC23 cells using MUS. BOSC23 cells were transiently transfected with an expression vector encoding either CEACAM6 (red curve) or an irrelevant protein (control transfectant). Binding of MUS was detected with a PE conjugated secondary antibody



### Flow Cytometry

**Image 3.** FACS analysis of BOSC23 cells using MUS. BOSC23 cells were transiently transfected with an expression vector encoding either CEACAM5 (red curve) or an irrelevant protein (control transfectant). Binding of MUS was detected with a PE-conjugated secondary antibody. A positive signal was obtained only with CEACAM5 transfected cells.

Please check the [product details page](#) for more images. Overall 5 images are available for ABIN108730.