

Datasheet for ABIN108734
anti-CEACAM5 antibody

3 Images



[Go to Product page](#)

Overview

| | |
|--------------|---|
| Quantity: | 100 µg |
| Target: | CEACAM5 |
| Reactivity: | Human |
| Host: | Mouse |
| Clonality: | Monoclonal |
| Conjugate: | This CEACAM5 antibody is un-conjugated |
| Application: | Flow Cytometry (FACS), Immunofluorescence (IF), Western Blotting (WB), ELISA, Immunohistochemistry (Frozen Sections) (IHC (fro)), Cell-ELISA (cELISA) |

Product Details

| | |
|---------------|--|
| Immunogen: | immunisation with extracted protein of CEACAM5 |
| Clone: | 26-5-1 |
| Isotype: | IgG2a |
| Specificity: | Anti-human CEACAM5 (CEA, CD66e) |
| Purification: | Protein G |

Target Details

| | |
|-------------------|---|
| Target: | CEACAM5 |
| Alternative Name: | CEACAM5 (CEACAM5 Products) |
| Background: | CEACAM5 or CEA is the name-giving member of the CEACAM family. CEACAM5 is used as a |

Target Details

tumor marker for early detection of recurrent disease and is a potential target of tumor imaging, drugs and immunotargeting. 26/5/1 can be used to distinguish CEACAM5 from all other CEACAM and probably all pregnancy-specific glycoproteins molecules.

UniProt: [P06731](#)

Application Details

Application Notes: Flow cytometry: 1.2 µg/10⁶ cells
ELISA: 1:200 - 1:400
CELISA: 1:200 Western blot: 4 µg/mL
Immunohistology: 1-2 µg/10⁶ cells (on cryosections)
For each application a titration should be performed to determine the optimal concentration.

Comment: Synonyms: CD66e, CEA

Restrictions: For Research Use only

Handling

Concentration: 1 mg/mL
Buffer: PBS, pH 7.2
Handling Advice: Avoid repeated freezing and thawing.
Storage: 4 °C
Storage Comment: short term: 2 °C - 8 °C, long term: -20 °C

Images

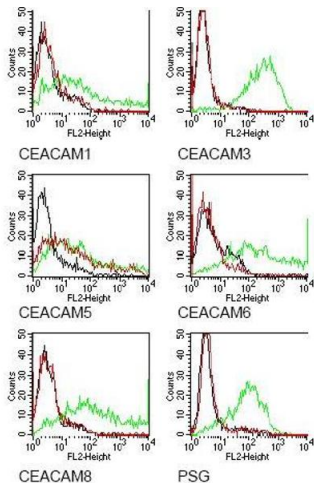
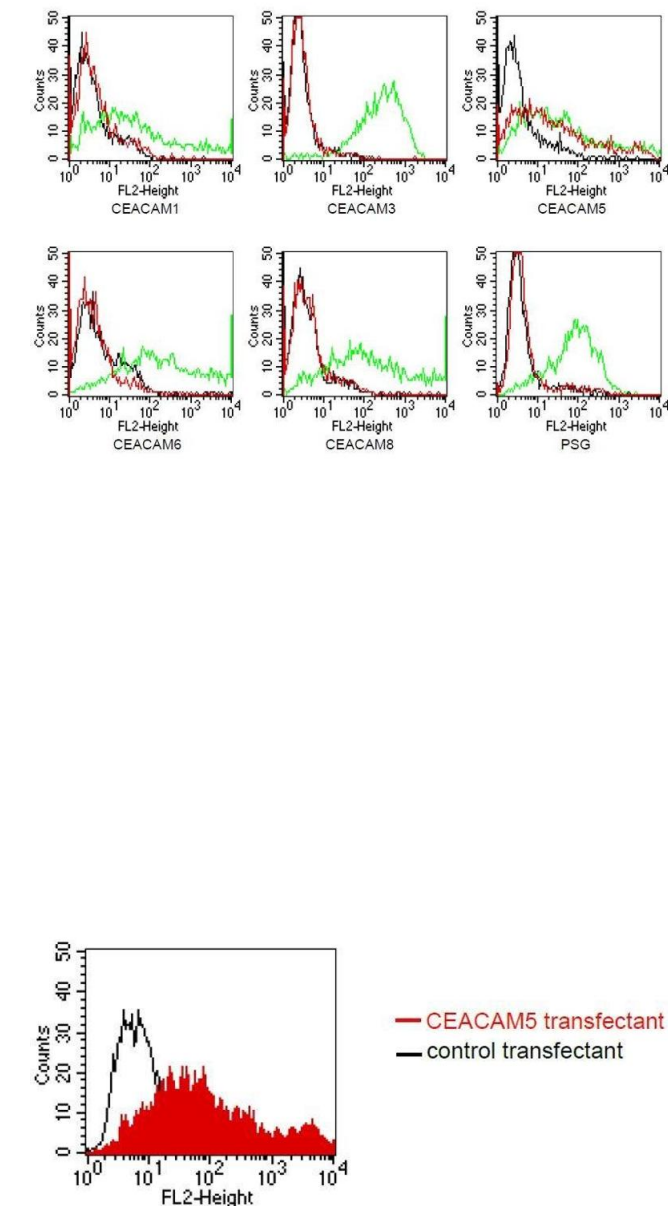


Image 1. Specificity testing of 26/5/1. Members of the CEA family were expressed on BOSC cells after transient transfection with expression vectors containing either the cDNA of CEACAM1, 5, 6 or 8. Recognition of CEACAM3 and of a recombinant transmembrane-anchore



Flow Cytometry

Image 2. Members of the CEA family were expressed on BOSC cells after transient transfection with expression vectors containing either the cDNA of CEACAM1, 5, 6 or 8. Recognition of CEACAM3 and of a recombinant transmembrane-anchored PSG1 fusion protein was tested on stably transfected HeLa cells. Expression of the constructs was confirmed with monoclonal antibodies known to recognize the corresponding proteins (CEACAM1, 3, 5 and 6: D14HD11; CEACAM8: 80H3; PSG: BAP1; green curves). An irrelevant monoclonal antibody served as a negative control (black curves). For specificity testing, protein G purified 26/5/1 was tested on all CEACAM transfectants. A positive signal was only obtained with CEACAM5 expressing cells (red curves).

Flow Cytometry

Image 3. FACS analysis of BOSC23 cells using 26/5/1. BOSC23 cells were transiently transfected with an expression vector encoding either CEACAM5 (red curve) or an irrelevant protein (control transfectant). Binding of 26/5/1 was detected with a PE-conjugated secondary antibody. A positive signal was obtained only with CEACAM5 transfected cells.