



Datasheet for ABIN108737
anti-CYP1A antibody



[Go to Product page](#)

3 Images

Overview

Quantity:	100 µL
Target:	CYP1A
Reactivity:	Fish
Host:	Mouse
Clonality:	Monoclonal
Conjugate:	This CYP1A antibody is un-conjugated
Application:	Immunohistochemistry (IHC), ELISA, Western Blotting (WB)

Product Details

Immunogen:	A synthetic peptide corresponding to amino-acid sequence 277-294 of rainbow trout CYP1A, coupled to the carrier protein keyhole limpet hemocyanin (KLH).
Clone:	C10-7
Isotype:	IgG3 kappa
Specificity:	C10-7 cross-reacts with CYP1A in liver samples from carp (<i>Cyprinus carpio</i>), rainbow trout (<i>Oncorhynchus mykiss</i>), salmon (<i>Salmo salar</i>), Atlantic cod (<i>Gadus morhua</i>), turbot (<i>Scophthalmus maximus</i>) lemon sole (<i>Microstomus kitt</i>) and mudfish (<i>Clarias anguillaris</i>). The degree of cross-reactivity differ between species and with the different methods employed.

Target Details

Target:	CYP1A
Abstract:	CYP1A Products

Target Details

Background: The product consists of Protein-A affinity-purified mouse monoclonal antibodies against peptide 277-294 of rainbow trout (*Oncorhynchus mykiss*) cytochrome P450 1A (CYP1A). The antibodies are dissolved in 0.1 M Na-phosphate, 0.15 M NaCl, 1% BSA, 0.1% Na-azide, pH 7.4.

Application Details

Application Notes: C10-7 is well suited for ELISA. The antibody also work well in western blot for a number of species. The antibody also works well in immunohistochemistry. Since assay conditions vary, the optimum dilution should be determined for each particular application. Note: The antibody is dissolved in a buffer containing BSA, and is therefore not recommended to use for coating. Normal dilution range: ELISA: 1:300 - 1: 1000. Western blot: 1:50 - 1:500

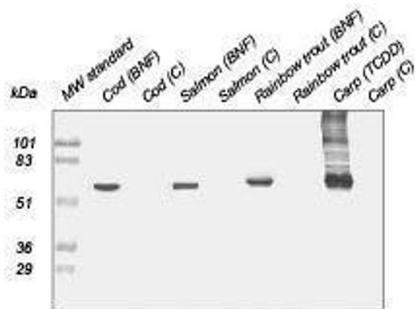
Restrictions: For Research Use only

Handling

Format: Liquid

Storage: 4 °C

Images



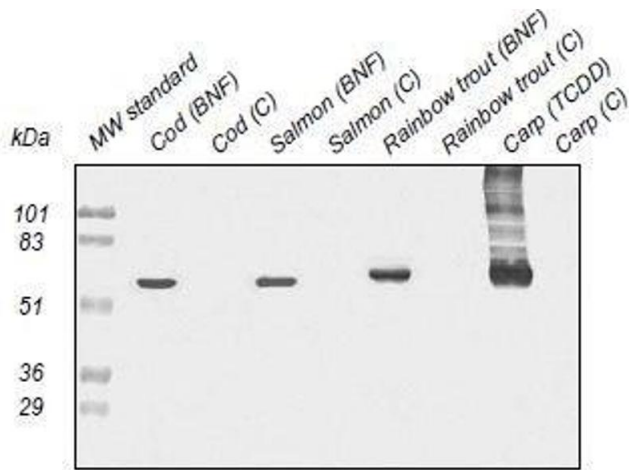
Western blot

Samples: Liver microsomes (10 µg protein/well) from β-naphthoflavone treated (BNF), tetrachlorodibenzo-p-dioxin treated (TCDD) or control (C) fish.

Primary antibody: C10-7 diluted 1:3000

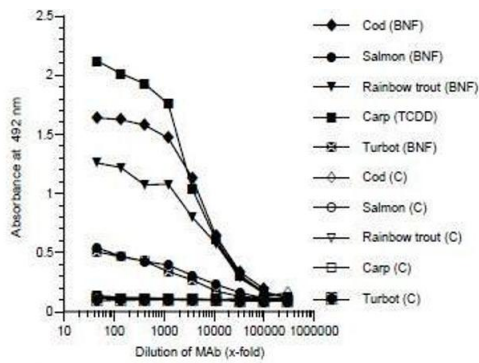
Western Blotting

Image 1. Western Blot



Western Blotting

Image 2.



ELISA

Image 3.

ELISA

Coating: Liver microsomes (10 µg protein/ml) from β-naphthoflavone treated (BNF), tetrachloro-dibenzo-p-dioxin treated (TCDD) or control (C) fish.

Primary antibody: C10-7