



[Go to Product page](#)

Datasheet for ABIN108738

## anti-CYP1A antibody

### 3 Images

#### Overview

Quantity:	100 µL
Target:	CYP1A
Reactivity:	Fish
Host:	Rabbit
Clonality:	Polyclonal
Conjugate:	This CYP1A antibody is un-conjugated
Application:	Immunohistochemistry (IHC), ELISA, Western Blotting (WB)

#### Product Details

Immunogen:	Immunogen source: Synthetic peptides corresponding to amino acid sequence 190-204 and 282-296 of rainbow trout CYP1A, the latter coupled to the carrier protein keyhole limpet hemocyanin (KLH).
Specificity:	CP-226 crossreacts well with CYP1A in liver samples from a wide variety of species, including rainbow trout ( <i>Oncorhynchus mykiss</i> ), Atlantic salmon ( <i>Salmo salar</i> ), Atlantic cod ( <i>Gadus morhua</i> ), carp ( <i>Cyprinus carpio</i> ), flounder ( <i>Platichthys flesus</i> ), sheepshead minnow ( <i>Cyprinodon variegatus</i> ) and gilthead seabream ( <i>Sparus aurata</i> ). The degree of cross-reactivity differs between species and with the different methods employed.

#### Target Details

Target:	CYP1A
Abstract:	<a href="#">CYP1A Products</a>

## Target Details

**Background:** This product consists of affinity-purified rabbit polyclonal antibodies against peptides 190-204 and 282-296 of rainbow trout (*Oncorhynchus mykiss*) cytochrome P450 1A (CYP1A). The antibodies are dissolved in 0.1 M Na-phosphate, 0.15 M NaCl, 1% BSA, 0.1% Na-azide, pH 7.4.

## Application Details

**Application Notes:** CP-226 works well in both ELISA and western blot for a number of fish species. The antibody also works well in immunohistochemistry. Since assay conditions vary, the optimum dilution should be determined for each particular application. Note: The antibody is dissolved in a buffer containing BSA, and is therefore not recommended to use for coating. Normal dilution range: ELISA: 1:100 - 1:2000, Western blot: 1:100 - 1:2000

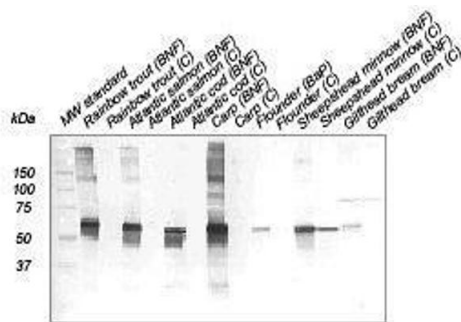
**Restrictions:** For Research Use only

## Handling

**Format:** Liquid

**Storage:** 4 °C

## Images



### Western blot

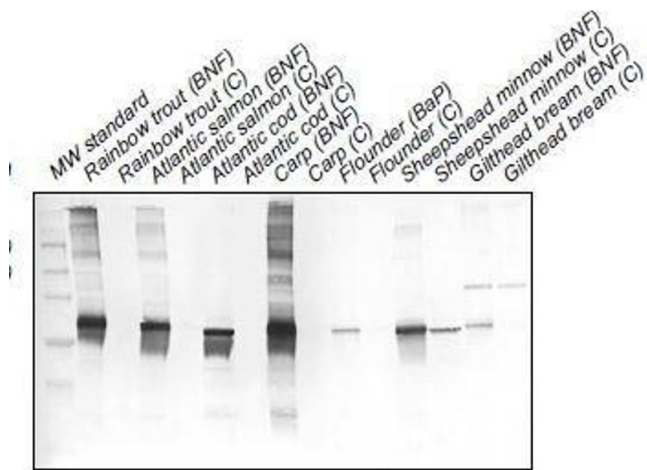
**Samples:** Liver microsomes (10 µg protein/well) from  $\beta$ -naphthoflavone treated (BNF), benzo(a)pyrene treated (BaP) or control (C) fish.  
**Primary antibody:** CP-226 diluted 1:500

## Western Blotting

### Image 1. Western Blot

## Western Blotting

Image 2.



## ELISA

Image 3.

