



[Go to Product page](#)

Datasheet for ABIN108743

anti-CYP1A antibody

3 Images

Overview

Quantity:	100 µL
Target:	CYP1A
Reactivity:	Cod
Host:	Mouse
Clonality:	Monoclonal
Conjugate:	This CYP1A antibody is un-conjugated
Application:	Immunohistochemistry (IHC), ELISA, Western Blotting (WB)

Product Details

Immunogen:	Immunogen source: Cytochrome P450 1A, purified from liver microsomes of β -naphthoflavone treated Atlantic cod.
Clone:	NP-7
Isotype:	IgG1 kappa
Specificity:	The antibody NP-7 cross-reacts with a petroleum/PAH /PCB/dioxin-inducible protein (mr = 55,000-59,000) in liver samples from a wide variety of different fish species from cod (Gadiformes), carp (Cypriniformes), salmon (Salmoniformes), and some flatfish (Pleuronectiformes) (see examples below) . The degree of cross-reactivity may differ between species and with the different methods employed.

Target Details

Target:	CYP1A
---------	-------

Target Details

Abstract: [CYP1A Products](#)

Background: This product consists of Protein-G affinity-purified monoclonal mouse antibodies against CYP1A from Atlantic cod (*Gadus morhua*). The antibodies are dissolved in 0.1 M Na-phosphate buffer, 0.15 M NaCl, 1% BSA, 0.1% Na-azide, pH 7.4.

Application Details

Application Notes: NP-7 is well suited for a variety of applications including immuno-blotting, ELISA and immunohisto-chemistry. Since assay conditions vary, the optimum dilution should be determined for each particular application. Note: The Antibody is dissolved in a buffer containing BSA, and is therefore not recommended to use for coating. Normal dilution: 1:500 - 1:1000 (Cod). 1:50 - 1:100 (Other species).

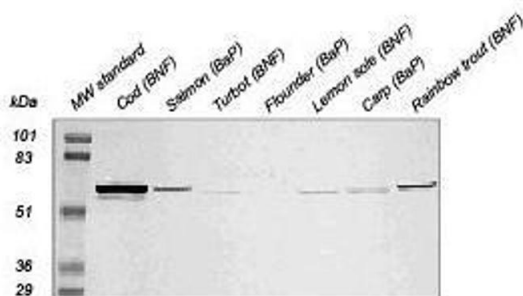
Restrictions: For Research Use only

Handling

Format: Liquid

Storage: 4 °C

Images



Western blot

Samples: Liver microsomes (10 µg protein/well) from β -naphthoflavone treated (BNF) or benzo(a)pyrene treated (BaP) fish.

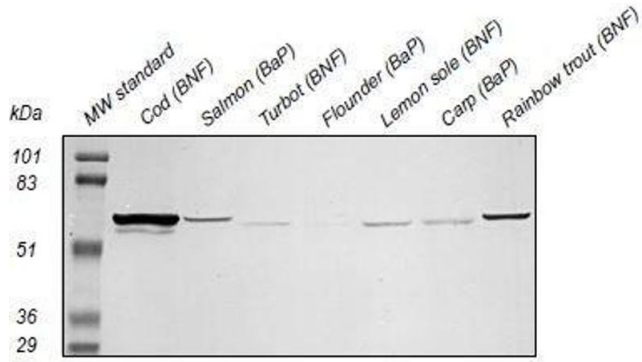
Primary antibody: NP-7 diluted 1:100

Western Blotting

Image 1. Western Blot

Western Blotting

Image 2.



ELISA

Image 3.

