

Datasheet for ABIN1095422

30S Ribosomal Protein S2 Protein (AA 2-241, full length) (GST tag)



[Go to Product page](#)

1 Image

2 Publications

Overview

Quantity:	100 µg
Target:	30S Ribosomal Protein S2
Protein Characteristics:	AA 2-241, full length
Origin:	E. coli
Source:	Escherichia coli (E. coli)
Protein Type:	Recombinant
Purification tag / Conjugate:	This 30S Ribosomal Protein S2 protein is labelled with GST tag.
Application:	ELISA, SDS-PAGE (SDS)

Product Details

Sequence:	ATVSMRDMLK AGVHFGHQTR YWNPKMKPMF FGARNKVHII NLEKTVPMFN EALAELNKIA SRKGKILFVG TKRAASEAVK DAALSCDQFF VNHRWLGGML TNWKTVRQSI KRLKDLETQS QDGTDFDKLTK KEALMRTREL EKLENSLGGI KDMGGLPDAL FVIDADHEHI AIKEANNLGI PVFAIVDTNS DPDGVDFVIP GNDDAIRAVT LYLGAVAATV REGRSQDLAS QAEESFVEAE
Characteristics:	Belongs to the ribosomal protein S2P family.
Purity:	90 %

Target Details

Target:	30S Ribosomal Protein S2
Abstract:	30S Ribosomal Protein S2 Products
Molecular Weight:	54 kD

Target Details

UniProt: [P0A7V0](#)

Application Details

Comment: Repeated freezing and thawing is not recommended. Store working aliquots at 4°C for up to one week.

Restrictions: For Research Use only

Handling

Format: Lyophilized

Buffer: PBS buffer, 20mM GSH

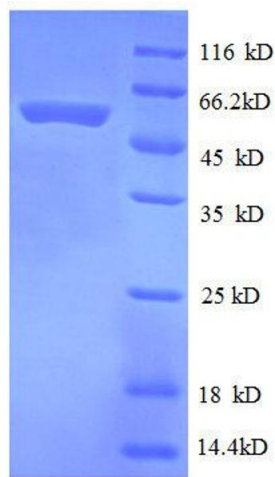
Storage: -20 °C

Publications

Product cited in: Humphray, Oliver, Hunt, Plumb, Loveland, Howe, Andrews, Searle, Hunt, Scott, Jones, Ainscough, Almeida, Ambrose, Ashwell, Babbage, Babbage, Bagguley, Bailey, Banerjee, Barker, Barlow, Bates, Beasley et al.: "DNA sequence and analysis of human chromosome 9. ..." in: **Nature**, Vol. 429, Issue 6990, pp. 369-74, (2004) ([PubMed](#)).

Grabmaier, Vissers, De Weijert, Oosterwijk-Wakka, Van Bokhoven, Brakenhoff, Noessner, Mulders, Merkx, Figdor, Adema, Oosterwijk: "Molecular cloning and immunogenicity of renal cell carcinoma-associated antigen G250." in: **International journal of cancer. Journal international du cancer**, Vol. 85, Issue 6, pp. 865-70, (2000) ([PubMed](#)).

Pastorek, Pastoreková, Callebaut, Mornon, Zelník, Opavský, Zatovicová, Liao, Portetelle, Stanbridge: "Cloning and characterization of MN, a human tumor-associated protein with a domain homologous to carbonic anhydrase and a putative helix-loop-helix DNA binding segment." in: **Oncogene**, Vol. 9, Issue 10, pp. 2877-88, (1994) ([PubMed](#)).



SDS-PAGE

Image 1. 30S Ribosomal Protein S2 (AA 2-241), (full length) protein (GST tag)