

Datasheet for ABIN109738

anti-Parathyroid Hormone 2 (PTH2) antibody[Go to Product page](#)**1** Image

Overview

Quantity:	100 µL
Target:	Parathyroid Hormone 2 (PTH2)
Reactivity:	Human
Host:	Rabbit
Clonality:	Polyclonal
Conjugate:	Un-conjugated
Application:	ELISA, Radioimmunoassay (RIA)

Product Details

Immunogen:	synthetic human TIP 39 (aa 62-100) KLH conjugated (SLALADDAAFRERARLLAALERRHWLNSYMHKLLVLDAP)
Specificity:	Human, bovine, canis TIP 39

Target Details

Target:	Parathyroid Hormone 2 (PTH2)
Alternative Name:	TIP 39 (PTH2 Products)
Background:	Serum
Pathways:	Sensory Perception of Sound , cAMP Metabolic Process , Regulation of Muscle Cell Differentiation , Tube Formation , Skeletal Muscle Fiber Development

Application Details

Application Notes: ELISA (1/4.000) RIA (1/ 2.000) This antibody has not been tested for use in all applications. This does not necessarily exclude its use for non-tested procedures. The stated dilutions are recommendations only. We suggest that the applicant titrates the antibody in his/her system using appropriate negative/positive controls.

Restrictions: For Research Use only

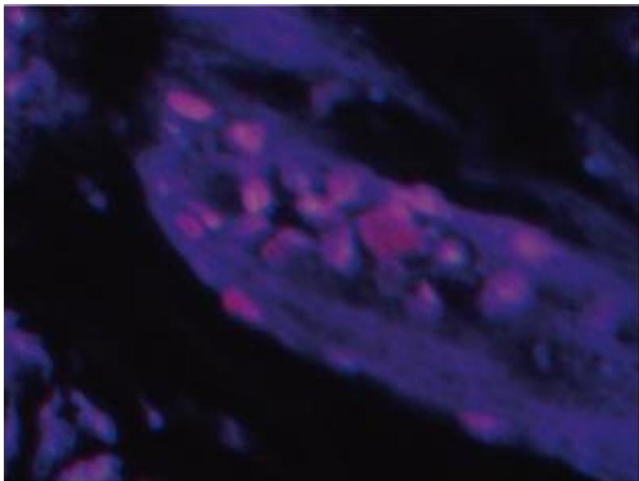
Handling

Format: Lyophilized

Reconstitution: Resuspend in aqua bidest.

Storage: 4 °C

Images



Immunofluorescence

Image 1. Immunofluorescence image of TIP 39 staining in paraffin section of human trachea. The section was incubated With ABIN109738 (1:1 00), followed by an appropriate secondary antibody coupled to Cy3. The nuclei were stained With DAPI. Original magnification: x40.