

Datasheet for ABIN109784  
**anti-BSP antibody**



[Go to Product page](#)

1 Image

### Overview

|              |   |
|--------------|---|
| Quantity:    | 100 µg  |
| Target:      | BSP   |
| Reactivity:  | Human   |
| Host:        | Chicken   |
| Clonality:   | Polyclonal  |
| Conjugate:   | This BSP antibody is un-conjugated  |
| Application: | ELISA, Western Blotting (WB), Radioimmunoassay (RIA), Immunocytochemistry (ICC) |

### Product Details

|              |  |
|--------------|--|
| Immunogen:   | Human Bone Sialoprotein (bone extract)   |
| Specificity: | Human Bone Sialoprotein There were no cross reactivities obtained with human Osteonectin, human Osteopontin and human Alkaline Phosphatase |

### Target Details

|                   |  |
|-------------------|--|
| Target:           | BSP  |
| Alternative Name: | Bone Sialoprotein ( <a href="#">BSP Products</a> ) |
| Background:       | Purified IgY PBS pH 7,4                            |
| Gene ID:          | 3381   |

## Application Details

Application Notes: ELISA (1 microg/ml) RIA (20 ng/ml) flow cytometry western blot (2 ng/ml) paraffin sections (2 ng/ml) Immunocytochemistry (1/100) This antibody has not been tested for use in all applications. This does not necessarily exclude its use for non-tested procedures. The stated dilutions are recommendations only. We suggest that the applicant titrates the antibody in his/her system using appropriate negative/positive controls.

Restrictions: For Research Use only

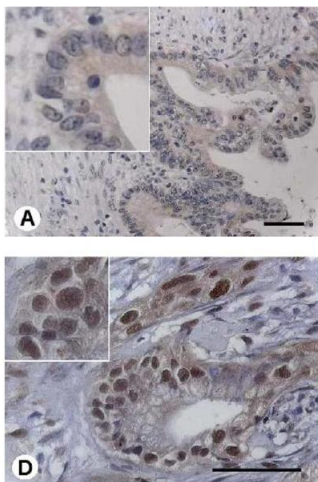
## Handling

Format: Lyophilized

Reconstitution: Resuspend in aqua bidest.

Storage: 4 °C

## Images



### Immunohistochemistry

**Image 1.** Immunohistochemistry image of BSP staining in paraffin sections of pancreatic ductal adenocarcinoma. Sections were incubated with ABIN109784 (4 ug/ml) and detected using HRP-conjugated secondary antibody. DAB was used as the chromogen. The sections were counterstained with Mayer's hematoxylin. A. ABIN109784 stains pancreatic cancer cells and D. lymph node metastases of pancreatic cancer. Scale bar 50pm. Kayed H et al. (2007) Cancer Letters 245: 171-83