



[Go to Product page](#)

Datasheet for ABIN109788  
**anti-BSP antibody (AA 201-211)**

1 Image

### Overview

Quantity:	100 µL
Target:	BSP
Binding Specificity:	AA 201-211
Reactivity:	Human
Host:	Rabbit
Clonality:	Polyclonal
Conjugate:	This BSP antibody is un-conjugated
Application:	ELISA, Immunocytochemistry (ICC)

### Product Details

Immunogen:	Synthetic human Bone Sialoprotein (aa 201-211) ((Y)TGGQGKGTSKT)
Specificity:	Human Bone Sialoprotein (aa 201-211) Cross reactivity with human Bone Sialoprotein

### Target Details

Target:	BSP
Alternative Name:	Bone Sialoprotein ( <a href="#">BSP Products</a> )
Background:	Serum
Gene ID:	3381

## Application Details

Application Notes: ELISA (1/1000) Immunocytochemistry (1/100) This antibody has not been tested for use in all applications. This does not necessarily exclude its use for non-tested procedures. The stated dilutions are recommendations only. We suggest that the applicant titrates the antibody in his/her system using appropriate negative/positive controls.

Restrictions: For Research Use only

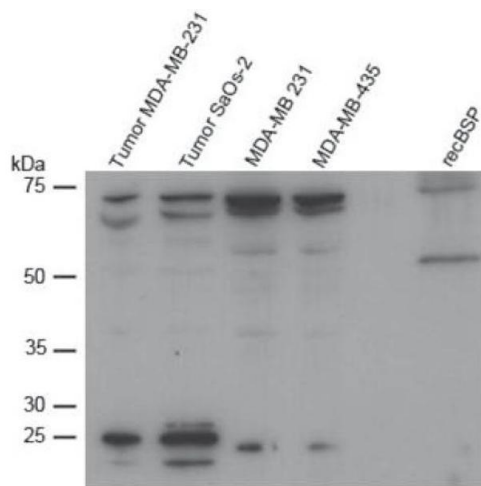
## Handling

Format: Lyophilized

Reconstitution: Resuspend in aqua bidest.

Storage: 4 °C

## Images



### Western Blotting

**Image 1.** Western Blot analysis of BSP expression in different cell lines. Cell lysates and recombinant BSP were separated by SDS- PAGE and immunoblotted With ABIN109788 (1:7000).