



Datasheet for ABIN1098105 **anti-PLK1 antibody (AA 331-508)**



[Go to Product page](#)

6 Images

3 Publications

Overview

Quantity:	0.1 mg
Target:	PLK1
Binding Specificity:	AA 331-508
Reactivity:	Human, Mouse
Host:	Mouse
Clonality:	Monoclonal
Application:	Western Blotting (WB), ELISA, Immunohistochemistry (IHC), Flow Cytometry (FACS)

Product Details

Immunogen:	Purified recombinant fragment of human PLK1 (AA: 331-508) expressed in E. coli.
Clone:	3C11
Isotype:	IgG1
Purification:	purified

Target Details

Target:	PLK1
Alternative Name:	PLK1 (PLK1 Products)
Background:	Description: Polo-like kinase 1 (Plk1) plays key roles in many aspects of mitosis. Suppression of Plk1 by p21(Waf1) is responsible for p53-dependent protection against adriamycin-induced caspase-independent mitotic death. Aliases: PLK,STPK13

Target Details

Molecular Weight: 68 kDa

Gene ID: 5347

HGNC: 5347

Pathways: [Cell Division Cycle, M Phase](#)

Application Details

Application Notes: ELISA: 1:10000, WB: 1:500 - 1:2000, IHC: 1:200 - 1:1000, FCM: 1:200 - 1:400

Restrictions: For Research Use only

Handling

Format: Liquid

Buffer: Purified antibody in PBS with 0.05 % sodium azide

Preservative: Sodium azide

Precaution of Use: This product contains Sodium azide: a POISONOUS AND HAZARDOUS SUBSTANCE which should be handled by trained staff only.

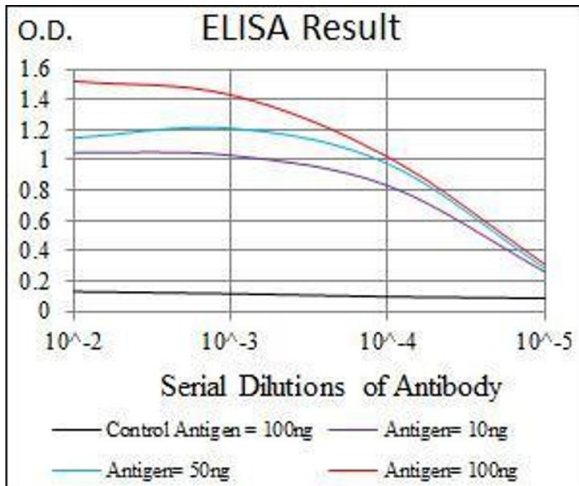
Storage: 4 °C/-20 °C

Storage Comment: 4°C, -20°C for long term storage

Publications

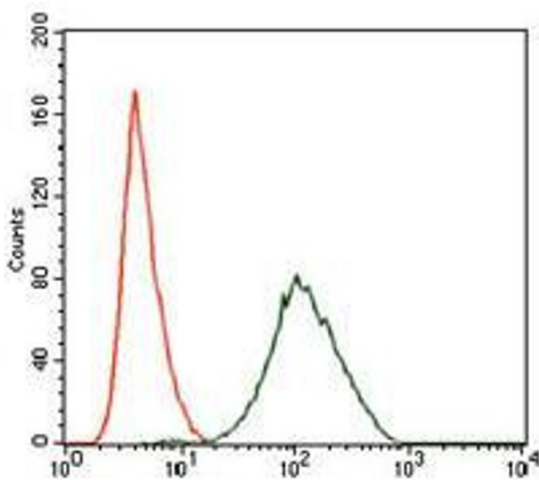
Product cited in: Xu, Deng, Mao, Zhang, Wang, Wang, Mu, Deng, Ma: "The interaction of the second Kunitz-type domain (KD2) of TFPI-2 with a novel interaction partner, prosaposin, mediates the inhibition of the invasion and migration of human fibrosarcoma cells." in: **The Biochemical journal**, Vol. 441, Issue 2, pp. 665-74, (2011) ([PubMed](#)).

Hu, Delorme, Liu, Liu, Velasco-Gonzalez, Garai, Pullikuth, Koochekpour: "Prosaposin down-modulation decreases metastatic prostate cancer cell adhesion, migration, and invasion." in: **Molecular cancer**, Vol. 9, pp. 30, (2010) ([PubMed](#)).



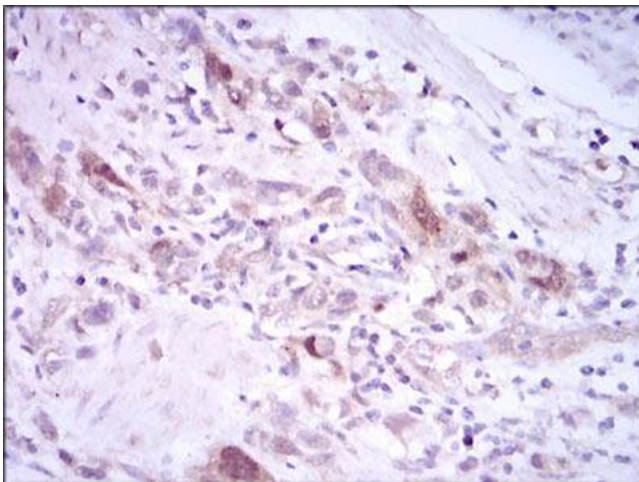
ELISA

Image 1. Black line: Control Antigen (100 ng), Purple line: Antigen(10 ng), Blue line: Antigen (50 ng), Red line: Antigen (100 ng),



Flow Cytometry

Image 2. Flow cytometric analysis of NIH3T3 cells using PLK1 mouse mAb (green) and negative control (red).



Immunohistochemistry

Image 3. Immunohistochemical analysis of paraffin-embedded stomach cancer tissues using PLK1 mouse mAb with DAB staining.

Please check the [product details page](#) for more images. Overall 6 images are available for ABIN1098105.