



[Go to Product page](#)

Datasheet for ABIN1098118  
**anti-CD6 antibody (AA 472-668)**

4 Images

2 Publications

### Overview

Quantity:	0.1 mg
Target:	CD6
Binding Specificity:	AA 472-668
Reactivity:	Human
Host:	Mouse
Clonality:	Monoclonal
Conjugate:	This CD6 antibody is un-conjugated
Application:	Western Blotting (WB), Immunohistochemistry (IHC), ELISA

### Product Details

Immunogen:	Purified recombinant fragment of human CD6 (AA: 472-668) expressed in E. coli.
Clone:	6B9
Isotype:	IgG1
Purification:	purified

### Target Details

Target:	CD6
Alternative Name:	CD6 ( <a href="#">CD6 Products</a> )
Background:	Description: This gene encodes a protein found on the outer membrane of T-lymphocytes as well as some other immune cells. The encoded protein contains three scavenger receptor

## Target Details

---

cysteine-rich (SRCR) domains and a binding site for an activated leukocyte cell adhesion molecule. The gene product is important for continuation of T cell activation. This gene may be associated with susceptibility to multiple sclerosis (PMID: 19525953, 21849685). Multiple transcript variants encoding different isoforms have been found for this gene.

Aliases: TP120, FLJ44171

---

Molecular Weight: 71.8 kDa

---

Gene ID: 923

---

HGNC: 923

## Application Details

---

Application Notes: ELISA: 1:10000, WB: 1:500 - 1:2000, IHC: 1:200 - 1:1000

---

Restrictions: For Research Use only

## Handling

---

Format: Liquid

---

Buffer: Purified antibody in PBS with 0.05 % sodium azide

---

Preservative: Sodium azide

---

Precaution of Use: This product contains Sodium azide: a POISONOUS AND HAZARDOUS SUBSTANCE which should be handled by trained staff only.

---

Storage: 4 °C/-20 °C

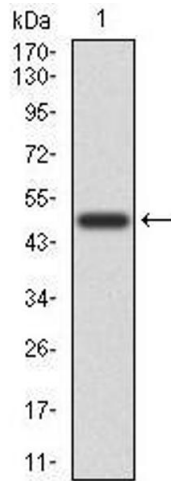
---

Storage Comment: 4°C, -20°C for long term storage

## Publications

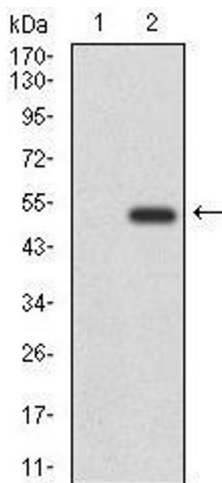
---

Product cited in: Martz, Guzman-Rodriguez, He, Noordhof, Hurlbut, Gloor, Carlucci, Weese, Allen-Vercove, Sun, Claud, Petrof: "A human gut ecosystem protects against *C. difficile* disease by targeting TcdA." in: **Journal of gastroenterology**, (2016) ([PubMed](#)).



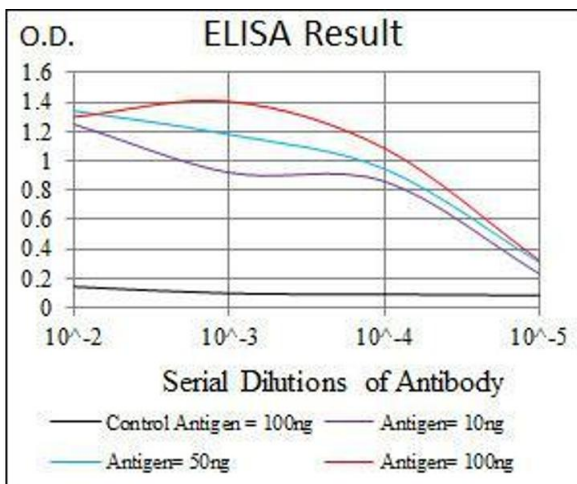
### Western Blotting

**Image 1.** Western blot analysis using CD6 mAb against human CD6 recombinant protein. (Expected MW is 46.9 kDa)



### Western Blotting

**Image 2.** Western blot analysis using CD6 mAb against HEK293 (1) and CD6 (AA: 472-668)-hlgGfc transfected HEK293 (2) cell lysate.



### ELISA

**Image 3.** Black line: Control Antigen (100 ng), Purple line: Antigen(10 ng), Blue line: Antigen (50 ng), Red line: Antigen (100 ng),

Please check the [product details page](#) for more images. Overall 4 images are available for ABIN1098118.