

Datasheet for ABIN1098131
anti-SCGB1A1 antibody (AA 26-91)[4 Images](#)[2 Publications](#)[Go to Product page](#)

Overview

Quantity:	0.1 mg
Target:	SCGB1A1
Binding Specificity:	AA 26-91
Reactivity:	Human
Host:	Mouse
Clonality:	Monoclonal
Application:	Western Blotting (WB), ELISA, Flow Cytometry (FACS)

Product Details

Immunogen:	Purified recombinant fragment of human SCGB1A1 (AA: 26-91) expressed in E. coli.
Clone:	3A8B8
Isotype:	IgG1
Purification:	purified

Target Details

Target:	SCGB1A1
Alternative Name:	SCGB1A1 (SCGB1A1 Products)
Background:	<p>Description: This gene encodes a member of the secretoglobin family of small secreted proteins. The encoded protein has been implicated in numerous functions including anti-inflammation, inhibition of phospholipase A2 and the sequestering of hydrophobic ligands.</p> <p>Defects in this gene are associated with a susceptibility to asthma. , , ,</p>

Target Details

	Aliases: UGB, UP1, CC10, CC16, CCSP, UP-1, CCPBP
Molecular Weight:	10 kDa
Gene ID:	7356
HGNC:	7356

Application Details

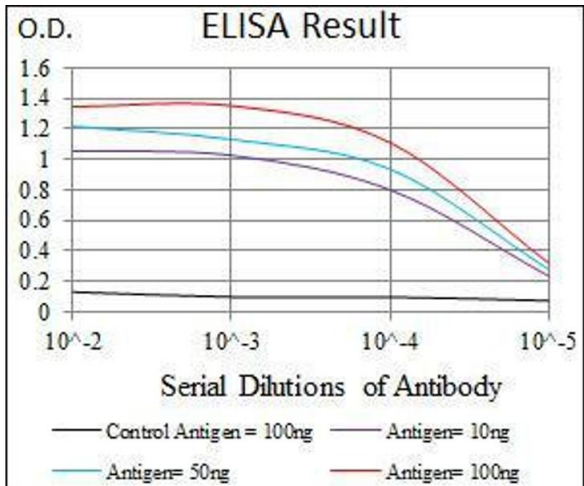
Application Notes:	ELISA: 1:10000, WB: 1:500 - 1:2000, FCM: 1:200 - 1:400
Restrictions:	For Research Use only

Handling

Format:	Liquid
Buffer:	Purified antibody in PBS with 0.05 % sodium azide
Preservative:	Sodium azide
Precaution of Use:	This product contains Sodium azide: a POISONOUS AND HAZARDOUS SUBSTANCE which should be handled by trained staff only.
Storage:	4 °C/-20 °C
Storage Comment:	4°C, -20°C for long term storage

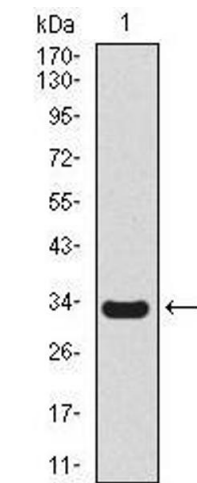
Publications

Product cited in:	<p>Xu, Deng, Mao, Zhang, Wang, Wang, Mu, Deng, Ma: "The interaction of the second Kunitz-type domain (KD2) of TFPI-2 with a novel interaction partner, prosaposin, mediates the inhibition of the invasion and migration of human fibrosarcoma cells." in: The Biochemical journal, Vol. 441, Issue 2, pp. 665-74, (2011) (PubMed).</p> <p>Hu, Delorme, Liu, Liu, Velasco-Gonzalez, Garai, Pullikuth, Koochekpour: "Prosaposin down-modulation decreases metastatic prostate cancer cell adhesion, migration, and invasion." in: Molecular cancer, Vol. 9, pp. 30, (2010) (PubMed).</p>
-------------------	---



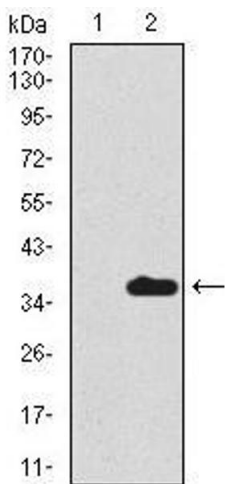
ELISA

Image 1. Black line: Control Antigen (100 ng), Purple line: Antigen(10 ng), Blue line: Antigen (50 ng), Red line: Antigen (100 ng),



Western Blotting

Image 2. Western blot analysis using SCGB1A1 mAb against human SCGB1A1 recombinant protein. (Expected MW is 33.4 kDa)



Western Blotting

Image 3. Western blot analysis using SCGB1A1 mAb against HEK293 (1) and SCGB1A1 (AA: 26-91)-hlgGfc transfected HEK293 (2) cell lysate.

Please check the [product details page](#) for more images. Overall 4 images are available for ABIN1098131.