

Datasheet for ABIN1098136
anti-T Antigen (AA 257-309) antibody

7 Images

2 Publications



[Go to Product page](#)

Overview

Quantity:	100 µL
Target:	T Antigen
Binding Specificity:	AA 257-309
Reactivity:	Human
Host:	Mouse
Clonality:	Monoclonal
Conjugate:	Un-conjugated
Application:	Western Blotting (WB), ELISA, Flow Cytometry (FACS), Immunohistochemistry (IHC)

Product Details

Immunogen:	Purified recombinant fragment of human T (AA 257-309) expressed in E. Coli.
Clone:	1H9A2
Isotype:	IgG1
Purification:	Purified

Target Details

Target:	T Antigen
Alternative Name:	T
Background:	The protein encoded by this gene is an embryonic nuclear transcription factor that binds to a specific DNA element, the palindromic T-site. It binds through a region in its N-terminus, called

Target Details

the T-box, and effects transcription of genes required for mesoderm formation and differentiation. The protein is localized to notochord-derived cells. , , , , ,

Molecular Weight: 47.4 kDa

Gene ID: 6862

HGNC: 6862

Application Details

Application Notes: ELISA: 1:10000, WB: 1:500 - 1:2000, IHC: 1:200 - 1:1000, FCM: 1:200 - 1:400

Restrictions: For Research Use only

Handling

Format: Liquid

Buffer: PBS with 0.05 % sodium azide

Preservative: Sodium azide

Precaution of Use: This product contains sodium azide: a POISONOUS AND HAZARDOUS SUBSTANCE which should be handled by trained staff only.

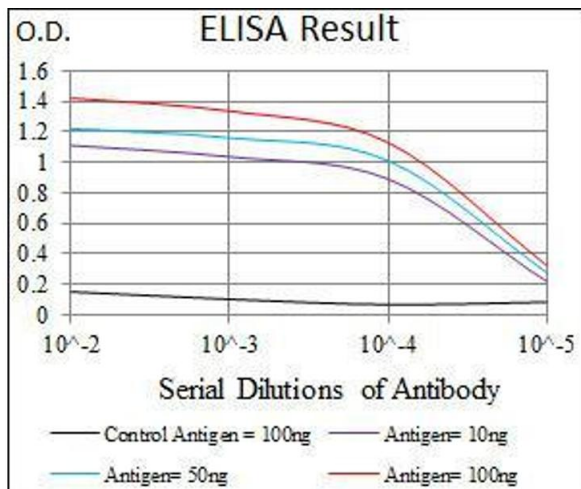
Storage: 4 °C, -20 °C

Storage Comment: 4°C, -20°C for long term storage

Publications

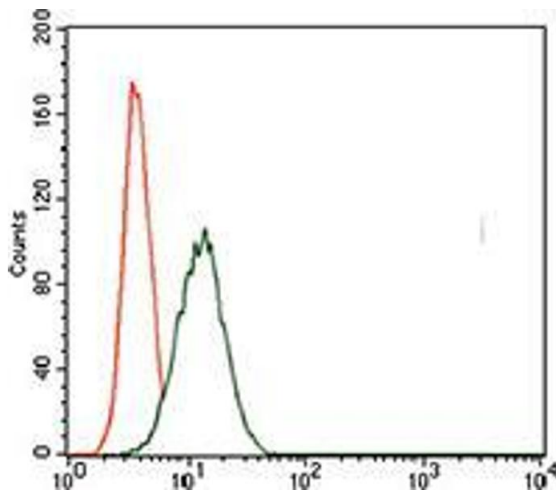
Product cited in: Shen, Li, Yang, Lu, Zou, Wang, Deng: "Classic chordoma coexisting with benign notochordal cell rest demonstrating different immunohistological expression patterns of brachyury and galectin-3." in: **Journal of clinical neuroscience : official journal of the Neurosurgical Society of Australasia**, Vol. 18, Issue 1, pp. 96-9, (2010) ([PubMed](#)).

Tirabosco, Mangham, Rosenberg, Vujovic, Bousdras, Pizzolitto, De Maglio, den Bakker, Di Francesco, Kalil, Athanasou, O'Donnell, McCarthy, Flanagan: "Brachyury expression in extra-axial skeletal and soft tissue chordomas: a marker that distinguishes chordoma from mixed tumor/myoepithelioma/parachordoma in soft tissue." in: **The American journal of surgical pathology**, Vol. 32, Issue 4, pp. 572-80, (2008) ([PubMed](#)).



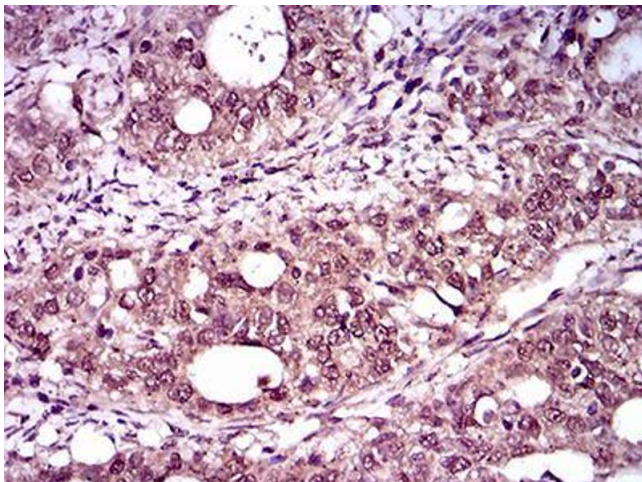
ELISA

Image 1. Black line: Control Antigen (100 ng), Purple line: Antigen(10 ng), Blue line: Antigen (50 ng), Red line: Antigen (100 ng),



Flow Cytometry

Image 2. Flow cytometric analysis of HeLa cells using T mouse mAb (green) and negative control (red).



Immunohistochemistry

Image 3. Immunohistochemical analysis of paraffin-embedded cervical cancer tissues using T mouse mAb with DAB staining.

Please check the [product details page](#) for more images. Overall 7 images are available for ABIN1098136.