

Datasheet for ABIN1098137
anti-KEAP1 antibody (AA 380-624)

5 Images

2 Publications

[Go to Product page](#)

Overview

Quantity:	100 µL
Target:	KEAP1
Binding Specificity:	AA 380-624
Reactivity:	Human, Mouse
Host:	Mouse
Clonality:	Monoclonal
Application:	Western Blotting (WB), ELISA, Flow Cytometry (FACS), Immunocytochemistry (ICC)

Product Details

Immunogen:	Purified recombinant fragment of human KEAP1 (AA: 380-624) expressed in E. coli.
Clone:	1F10B6
Isotype:	IgG1
Purification:	purified

Target Details

Target:	KEAP1
Alternative Name:	KEAP1 (KEAP1 Products)
Background:	Description: This gene encodes a protein containing KELCH-1 like domains, as well as a BTB/POZ domain. Kelch-like ECH-associated protein 1 interacts with NF-E2-related factor 2 in a redox-sensitive manner and the dissociation of the proteins in the cytoplasm is followed by transportation of NF-E2-related factor 2 to the nucleus. This interaction results in the

Target Details

expression of the catalytic subunit of gamma-glutamylcysteine synthetase. Two alternatively spliced transcript variants encoding the same isoform have been found for this gene. , , , , , ,
Aliases: INrf2, KLHL19

Molecular Weight: 69.7 kDa

Gene ID: 9817

HGNC: 9817

Pathways: [Maintenance of Protein Location](#)

Application Details

Application Notes: ELISA: 1:10000, WB: 1:500 - 1:2000, ICC: 1:50, FCM: 1:200 - 1:400

Restrictions: For Research Use only

Handling

Format: Liquid

Buffer: Ascitic fluid containing 0.03 % sodium azide.

Preservative: Sodium azide

Precaution of Use: This product contains Sodium azide: a POISONOUS AND HAZARDOUS SUBSTANCE which should be handled by trained staff only.

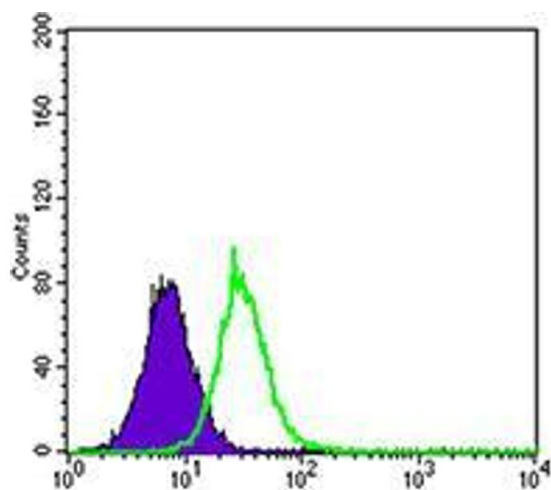
Storage: 4 °C/-20 °C

Storage Comment: 4°C, -20°C for long term storage

Publications

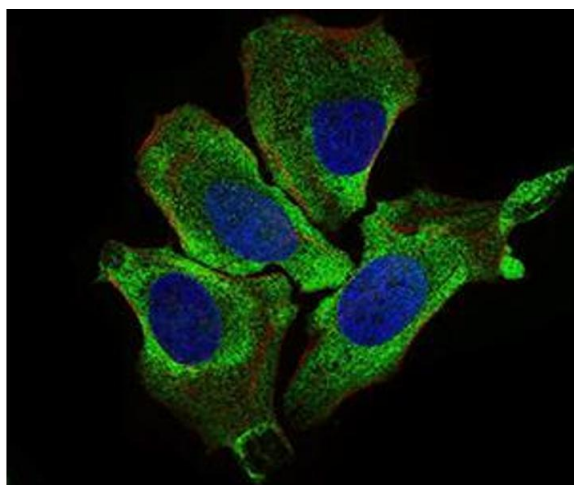
Product cited in: Xu, Deng, Mao, Zhang, Wang, Wang, Mu, Deng, Ma: "The interaction of the second Kunitz-type domain (KD2) of TFPI-2 with a novel interaction partner, prosaposin, mediates the inhibition of the invasion and migration of human fibrosarcoma cells." in: **The Biochemical journal**, Vol. 441, Issue 2, pp. 665-74, (2011) ([PubMed](#)).

Hu, Delorme, Liu, Liu, Velasco-Gonzalez, Garai, Pullikuth, Koochekpour: "Prosaposin down-modulation decreases metastatic prostate cancer cell adhesion, migration, and invasion." in: **Molecular cancer**, Vol. 9, pp. 30, (2010) ([PubMed](#)).



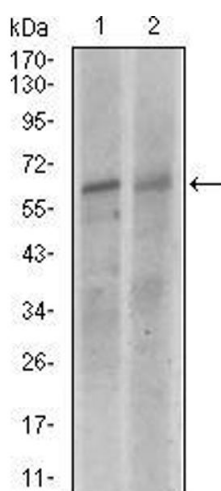
Flow Cytometry

Image 1. Flow cytometric analysis of HepG2 cells using KEAP1 mouse mAb (green) and negative control (purple).



Immunofluorescence

Image 2. Immunofluorescence analysis of HeLa cells using KEAP1 mouse mAb (green). Blue: DRAQ5 fluorescent DNA dye. Red: Actin filaments have been labeled with Alexa Fluor-555 phalloidin.



Western Blotting

Image 3. Western blot analysis using KEAP1 mouse mAb against NIH3T3 (1), and A549 (2) cell lysate.

Please check the [product details page](#) for more images. Overall 5 images are available for ABIN1098137.