

Datasheet for ABIN1098271 **GTF2F2 Protein (His tag)**



[Go to Product page](#)

1 Image

Overview

Quantity:	100 µg
Target:	GTF2F2
Origin:	Human
Source:	Escherichia coli (E. coli)
Protein Type:	Recombinant
Purification tag / Conjugate:	This GTF2F2 protein is labelled with His tag.
Application:	SDS-PAGE (SDS)

Product Details

Purification:	purified by chromatography
Purity:	> 90 % by SDS - PAGE

Target Details

Target:	GTF2F2
Alternative Name:	GTF2F2 (GTF2F2 Products)
Background:	<p>GTF2F2, also known as TFIIF, is a general transcription initiation factor that binds to RNA polymerase II and helps to recruit it to the initiation complex in collaboration with TFIIB. It promotes transcription elongation. This subunit shows ATP-dependent DNA-helicase activity.</p> <p>Recombinant human GTF2F2 protein, fused to His-tag at N-terminus, was expressed in E.coli and purified by using conventional chromatography techniques.</p>
Molecular Weight:	30.5 kDa(269aa), confirmed by MALDI-TOF (Molecular weight on SDS-PAGE will appear higher)

Target Details

NCBI Accession: [NP_004119](#)

Pathways: [SARS-CoV-2 Protein Interactome](#)

Application Details

Comment: Synonyms: General transcription factor IIF subunit 2, BTF4, RAP30, TF2F2, TFIIF

Restrictions: For Research Use only

Handling

Format: Liquid

Concentration: 0.5 mg/ml (determined by Bradford assay)

Buffer: 20 mM Tris-HCl buffer (pH 8.0) containing 20% glycerol 0.2 M NaCl, 1 MM DTT

Storage: 4 °C

Storage Comment: Avoid repeated freezing and thawing cycles.

Images

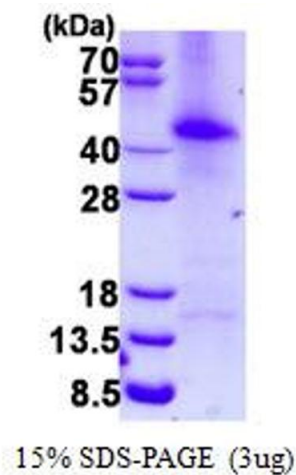


Image 1.