

## Datasheet for ABIN1098276 CSR2 Protein (His tag)



[Go to Product page](#)

### 1 Image

#### Overview

Quantity:	50 µg
Target:	CSR2
Origin:	Human
Source:	Escherichia coli (E. coli)
Protein Type:	Recombinant
Purification tag / Conjugate:	This CSR2 protein is labelled with His tag.
Application:	SDS-PAGE (SDS)

#### Product Details

Purification:	purified by chromatography
Purity:	> 90 % by SDS - PAGE

#### Target Details

Target:	CSR2
Alternative Name:	CSR2 ( <a href="#">CSR2 Products</a> )
Background:	CSR2 (Cysteine and glycine-rich protein 2) is a member of the CSR family, contains 2 LIM zinc-binding domains, which may be involved in regulatory processes important for development and cellular differentiation. This protein plays a role in the development of the embryonic vascular system. CSR2 contains two copies of the cysteine-rich amino acid sequence motif (LIM) with putative zinc-binding activity, and may be involved in regulating ordered cell growth. Other genes in the family include CSR1 and CSR3. Recombinant human

## Target Details

CSRP2 protein, fused to His-tag at N-terminus, was expressed in E.coli and purified by using conventional chromatography techniques.

Molecular Weight: 23.5kDa (217aa), confirmed by MALDI-TOF

NCBI Accession: [NP\\_001312](#)

## Application Details

Comment: Synonyms: cysteine and glycine-rich protein 2, CRP2, LMO5, SmLIM

Restrictions: For Research Use only

## Handling

Format: Liquid

Concentration: 0.5 mg/ml (determined by Bradford assay)

Buffer: 20 mM Tris-HCl buffer, pH 8.0, 10% glycerol, 2 mM DTT, 200 mM NaCl

Storage: 4 °C

Storage Comment: Avoid repeated freezing and thawing cycles.

## Images

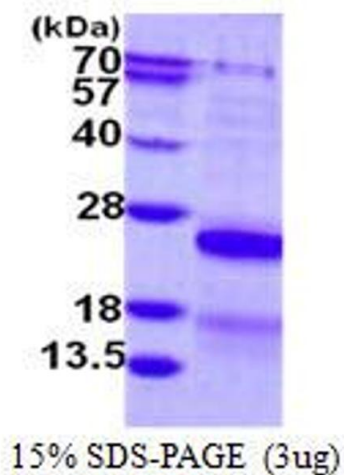


Image 1.