

Datasheet for ABIN1098291

CLTA Protein (His tag)[Go to Product page](#)**1** Image

Overview

Quantity:	100 µg
Target:	CLTA
Origin:	Human
Source:	Escherichia coli (E. coli)
Protein Type:	Recombinant
Purification tag / Conjugate:	This CLTA protein is labelled with His tag.
Application:	SDS-PAGE (SDS)

Product Details

Purification:	purified by chromatography
Purity:	> 90 % by SDS - PAGE

Target Details

Target:	CLTA
Alternative Name:	CLTA (CLTA Products)
Background:	<p>Clathrin, light chain A, also known as CLTA, belongs to the clathrin family. Clathrin is a large, soluble protein composed of heavy and light chains. It is a major cytosolic coat protein in pits and vesicles originating from the plasma membrane and the trans-Golgi network. In receptor-mediated endocytosis, receptor proteins are captured by Clathrin-coated vesicles. CLTA is one of two clathrin light chain proteins which are believed to function as regulatory elements.</p> <p>Recombinant human CLTA protein, fused to His-tag at N-terminus, was expressed in E.coli and</p>

Target Details

purified by using conventional chromatography techniques.

Molecular Weight: 26.2 kDa (242aa), confirmed by MALDI-TOF (Molecular weight on SDS-PAGE will appear higher)

NCBI Accession: [NP_001824](#)

Pathways: [EGFR Signaling Pathway](#), [Neurotrophin Signaling Pathway](#), [EGFR Downregulation](#)

Application Details

Comment: Synonyms: Clathrin, light chain A, LCA

Restrictions: For Research Use only

Handling

Format: Liquid

Concentration: 1 mg/ml (determined by Bradford assay)

Buffer: 20 mM Tris-HCl buffer (pH 8.0) containing 0.1 M NaCl, 10% glycerol

Storage: 4 °C

Storage Comment: Avoid repeated freezing and thawing cycles.

Images

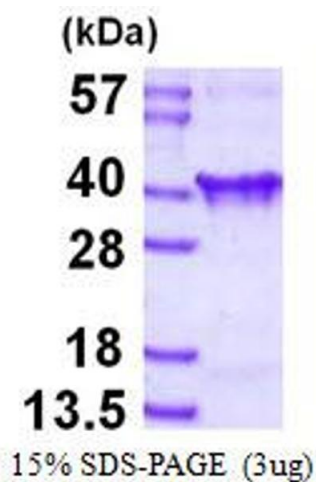


Image 1.