

Datasheet for ABIN1098336 **LDOC1L Protein (His tag)**



[Go to Product page](#)

1 Image

Overview

Quantity:	100 µg
Target:	LDOC1L
Origin:	Human
Source:	Escherichia coli (E. coli)
Protein Type:	Recombinant
Purification tag / Conjugate:	This LDOC1L protein is labelled with His tag.
Application:	SDS-PAGE (SDS)

Product Details

Purification:	purified by chromatography
Purity:	> 90 % by SDS - PAGE

Target Details

Target:	LDOC1L
Alternative Name:	LDOC1L (LDOC1L Products)
Background:	Leucine zipper, down-regulated in cancer 1-like, also known as LDOC1L, belongs to the LDOC1 family. LDOC1 is a nuclear protein that contains a leucine zipper-like motif and a proline-rich region that shares marked similarity with an SH3-binding domain. The protein localizes to the nucleus and is downregulated in some cancer cell lines. LDOC1L is thought to regulate the transcriptional response mediated by the nuclear factor kB (NFkB). Recombinant human LDOC1L protein, fused to His-tag at N-terminus, was expressed in E.coli and purified by using

Target Details

conventional chromatography techniques.

Molecular Weight: 28.7 kDa (263aa), confirmed by MALDI-TOF

NCBI Accession: [NP_115663](#)

Application Details

Comment: Synonyms: Protein LDOC1L, dJ1033E15.2, Mar6, Mart6

Restrictions: For Research Use only

Handling

Format: Liquid

Concentration: 0.5 mg/ml (determined by Bradford assay)

Buffer: 20 mM Tris-HCl buffer (pH 8.0) containing 0.1 M NaCl, 40% glycerol, 2 mM DTT, 0.1 MM PMSF, 1 MM EDTA

Storage: 4 °C

Storage Comment: Avoid repeated freezing and thawing cycles.

Images

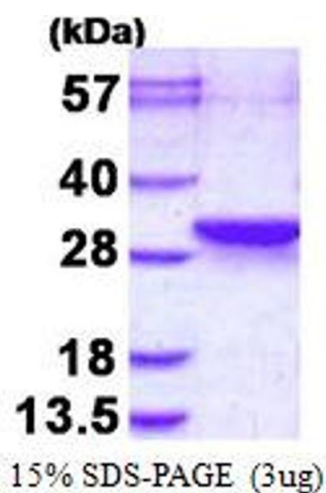


Image 1.