

Datasheet for ABIN1098357

CLTB Protein (His tag)[Go to Product page](#)**1** Image

Overview

Quantity:	100 µg
Target:	CLTB
Origin:	Human
Source:	Escherichia coli (E. coli)
Protein Type:	Recombinant
Purification tag / Conjugate:	This CLTB protein is labelled with His tag.
Application:	SDS-PAGE (SDS)

Product Details

Purification:	purified by chromatography
Purity:	> 85 % by SDS - PAGE

Target Details

Target:	CLTB
Alternative Name:	CLTB (CLTB Products)
Background:	CLTB (Clathrin light chain B) belongs to the clathrin light chain family. Clathrin is a protein that plays a major role in the formation of coated vesicles. It forms a triskelion shape composed of three clathrin heavy chains and three light chains. When the triskelia interact they form a polyhedral lattice that surrounds the vesicle. Coat-proteins, like clathrin, are used to build small vesicles in order to safely transport molecules between cells. Clathrin-mediated endocytosis (CME) regulates many cellular physiological processes such as the internalization of growth

Target Details

factors and receptors, entry of pathogens, and synaptic transmission. Recombinant human CLTB protein, fused to His-tag at N-terminus, was expressed in E.coli and purified by using conventional chromatography techniques.

Molecular Weight: 25.6kDa (234aa), confirmed by MALDI-TOF (Molecular weight on SDS-PAGE will appear higher)

NCBI Accession: [NP_001825](#)

Pathways: [Synaptic Membrane](#)

Application Details

Comment: Synonyms: clathrin, light chain B, LCB

Restrictions: For Research Use only

Handling

Format: Liquid

Concentration: 1 mg/ml (determined by Bradford assay)

Buffer: 20 mM Tris-HCl buffer, pH 8.0, 10% glycerol, 0.2 MM PMSF, 100 mM NaCl

Storage: 4 °C

Storage Comment: Avoid repeated freezing and thawing cycles.

Images

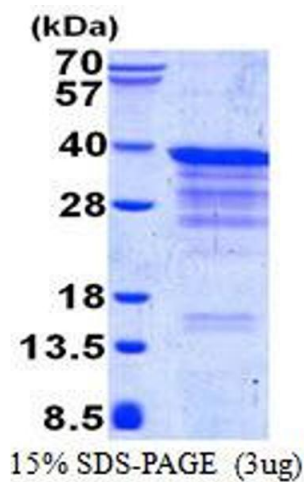


Image 1.