

Datasheet for ABIN1098359  
**ADPRHL2 Protein (His tag)**



[Go to Product page](#)

1 Image

## Overview

Quantity:	100 µg
Target:	ADPRHL2
Origin:	Human
Source:	Escherichia coli (E. coli)
Protein Type:	Recombinant
Purification tag / Conjugate:	This ADPRHL2 protein is labelled with His tag.
Application:	SDS-PAGE (SDS)

## Product Details

Purification:	purified by chromatography
Purity:	> 90 % by SDS - PAGE

## Target Details

Target:	ADPRHL2
Alternative Name:	ADPRHL2 ( <a href="#">ADPRHL2 Products</a> )
Background:	<p>ADP-ribosylhydrolase like 2, also known as ADPRHL2, is a member of the ADP-ribosylglycohydrolase family. Expressed ubiquitously, ADPRHL2 uses magnesium as a cofactor to catalyze the hydrolysis of poly (ADP-ribose) that is synthesized after DNA damage. Also, ADPRHL2 plays an important role in the maintenance of normal neuronal cell function.</p> <p>Recombinant human ADPRHL2 protein, fused to His-tag at N-terminus, was expressed in E.coli and purified by using conventional chromatography techniques.</p>

## Target Details

Molecular Weight: 41.5 kDa (387aa), confirmed by MALDI-TOF

NCBI Accession: [NP\\_060295](#)

## Application Details

Comment: Synonyms: ADP-ribosylhydrolase like 2, ARH3

Restrictions: For Research Use only

## Handling

Format: Liquid

Concentration: 0.5 mg/ml (determined by Bradford assay)

Buffer: 20 mM Tris-HCl buffer (pH 8.0) containing 0.1 M NaCl, 30% glycerol, 1 mM DTT

Storage: 4 °C

Storage Comment: Avoid repeated freezing and thawing cycles.

## Images

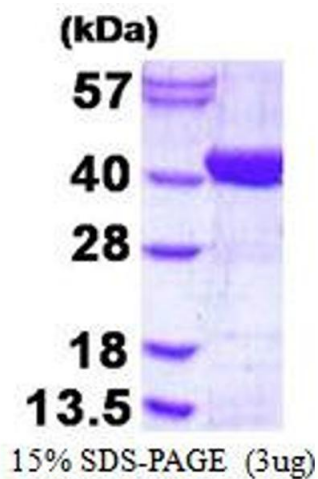


Image 1.