

Datasheet for ABIN1098369

**NPM2 Protein (His tag)**[Go to Product page](#)**1** Image

## Overview

Quantity:	50 µg
Target:	NPM2
Origin:	Human
Source:	Escherichia coli (E. coli)
Protein Type:	Recombinant
Purification tag / Conjugate:	This NPM2 protein is labelled with His tag.
Application:	SDS-PAGE (SDS)

## Product Details

Purification:	purified by chromatography
Purity:	> 85 % by SDS - PAGE

## Target Details

Target:	NPM2
Alternative Name:	NPM2 ( <a href="#">NPM2 Products</a> )

**Background:** NPM2, also known as nucleophosmin/nucleoplasmin 2, belongs to the nucleoplasmin family. This protein is core histones chaperone involved in chromatin reprogramming, especially during fertilization and early embryonic development. It probably involved in sperm DNA decondensation during fertilization. Recombinant human NPM2 protein, fused to His-tag at N-terminus, was expressed in E.coli and purified by using conventional chromatography techniques.

## Target Details

Molecular Weight:	26.6 kDa (237aa), confirmed by MALDI-TOF (Molecular weight on SDS-PAGE will appear higher)
NCBI Accession:	<a href="#">NP_877724</a>

## Application Details

Comment:	Synonyms: nucleophosmin/ nucleoplasmin 2, NPM-2
Restrictions:	For Research Use only

## Handling

Format:	Liquid
Concentration:	0.5 mg/ml (determined by Bradford assay)
Buffer:	20 mM Tris-HCl buffer (pH 8.0) containing 0.2 M NaCl, 20% glycerol, 2 mM DTT
Storage:	4 °C
Storage Comment:	Avoid repeated freezing and thawing cycles.

## Images

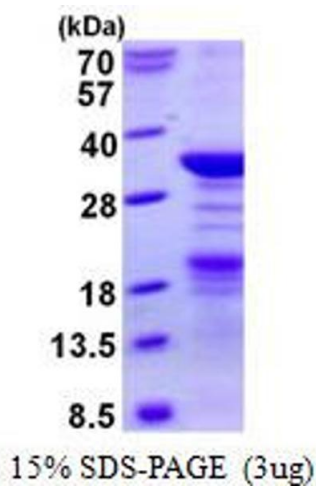


Image 1.