

## Datasheet for ABIN1098415 **ASNA1 Protein (His tag)**



[Go to Product page](#)

### 1 Image

#### Overview

Quantity:	100 µg
Target:	ASNA1
Origin:	Human
Source:	Escherichia coli (E. coli)
Protein Type:	Recombinant
Purification tag / Conjugate:	This ASNA1 protein is labelled with His tag.
Application:	SDS-PAGE (SDS)

#### Product Details

Purification:	purified by chromatography
Purity:	> 90 % by SDS - PAGE

#### Target Details

Target:	ASNA1
Alternative Name:	ASNA1 ( <a href="#">ASNA1 Products</a> )

**Background:** ASNA1, also as known as ARSA and TRC40, belongs to the arsA ATPase family. ASNA1 is the human homolog of the bacterial arsA gene. In E.coli, ArsA ATPase is the catalytic component of a multisubunit oxyanion pump that is responsible for resistance to arsenicals and antimonials. ATPase required for the post-translational delivery of tail-anchored (TA) proteins to the endoplasmic reticulum. Recombinant human ASNA1 protein, fused to His-tag at N-terminus, was expressed in E.coli and purified by using conventional chromatography techniques.

## Target Details

Molecular Weight: 41.2kDa (371aa) confirmed by MALDI-TOF

NCBI Accession: [NP\\_004308](#)

Pathways: [Positive Regulation of Peptide Hormone Secretion](#)

## Application Details

Comment: Synonyms: ATPase ASNA1, ARSA-I, ARSA1, ASNA-I, GET3, hASNA-I, TRC40

Restrictions: For Research Use only

## Handling

Format: Liquid

Concentration: 1 mg/ml (determined by Bradford assay)

Buffer: 20 mM Tris-HCl buffer (pH 8.0) containing 10% glycerol

Storage: 4 °C

Storage Comment: Avoid repeated freezing and thawing cycles.

## Images

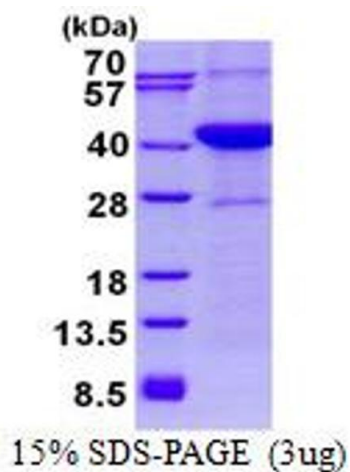


Image 1.