

Datasheet for ABIN1098421

**SIX Homeobox 6 Protein (SIX6) (His tag)**[Go to Product page](#)**1** Image

## Overview

Quantity:	100 µg
Target:	SIX Homeobox 6 (SIX6)
Origin:	Human
Source:	Escherichia coli (E. coli)
Protein Type:	Recombinant
Purification tag / Conjugate:	This SIX Homeobox 6 protein is labelled with His tag.
Application:	SDS-PAGE (SDS)

## Product Details

Purification:	purified by chromatography
Purity:	> 90 % by SDS - PAGE

## Target Details

Target:	SIX Homeobox 6 (SIX6)
Alternative Name:	SIX6 ( <a href="#">SIX6 Products</a> )
Background:	SIX6, also as known as OPTX2 and SIX9, belongs to the SIX/Sine oculis homeobox family contains 1 homeobox DNA-binding domain. The SIX homeobox protein is crucial in embryonic development by providing necessary instructions for the formation of the forebrain and eye development. This protein expressed in the developing and adult retina, hypothalamic and the pituitary regions. Defects in SIX6 are the cause of microphthalmia isolated with cataract type 2. Microphthalmia is a clinically heterogeneous disorder of eye formation, ranging from small size

## Target Details

---

of a single eye to complete bilateral absence of ocular tissues. Recombinant human SIX6 protein, fused to His-tag at N-terminus, was expressed in E.coli and purified by using conventional chromatography techniques.

Molecular Weight: 30.1kDa (269aa) confirmed by MALDI-TOF

## Application Details

---

Comment: Synonyms: SIX homeobox 6, MCOPT2, Six9

Restrictions: For Research Use only

## Handling

---

Format: Liquid

Concentration: 0.5 mg/ml (determined by Bradford assay)

Buffer: 20 mM Tris-HCl buffer (pH 8.0) containing 0.2 M NaCl, 40% glycerol, 5 mM DTT, 2 mM EDTA

Storage: 4 °C

Storage Comment: Avoid repeated freezing and thawing cycles.

## Images

---

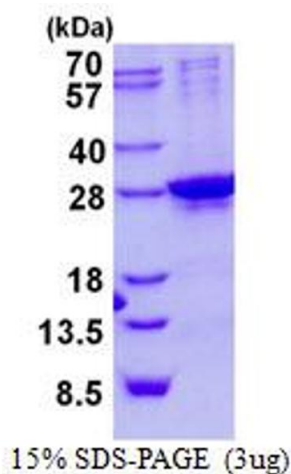


Image 1.