

Datasheet for ABIN1098454
SH3GLB1 Protein (His tag)



[Go to Product page](#)

1 Image

Overview

Quantity:	100 µg
Target:	SH3GLB1
Origin:	Human
Source:	Escherichia coli (E. coli)
Protein Type:	Recombinant
Purification tag / Conjugate:	This SH3GLB1 protein is labelled with His tag.
Application:	SDS-PAGE (SDS)

Product Details

Purification:	purified by chromatography
Purity:	> 90 % by SDS - PAGE

Target Details

Target:	SH3GLB1
Alternative Name:	SH3GLB1 (SH3GLB1 Products)
Background:	SH3GLB1, also as known as endophilin-B1, belongs to the endophilin family. Endophilin B1 is a member of the B subgroup of the endophilin family that is required for maintenance of mitochondrial morphology and for the regulation of the outer mitochondrial membrane dynamics. This protein required for normal outer mitochondrial membrane dynamics. Also it required for coatomer-mediated retrograde transport in certain cells. SH3GLB1 has been shown to interact with SH3GLB2 and Bcl-2-associated X protein. This protein highly expressed in heart,

Target Details

skeletal muscle, kidney and placenta. Recombinant human SH3GLB1 protein, fused to His-tag at C-terminus, was expressed in E.coli and purified by using conventional chromatography techniques.

Molecular Weight: 41.9kDa (373aa) confirmed by MALDI-TOF

NCBI Accession: [NP_057093](#)

Pathways: [Autophagy](#)

Application Details

Comment: Synonyms: Endophilin-B1, Bif-1, CGI-61, dJ612B15.2, PPP1R70

Restrictions: For Research Use only

Handling

Format: Liquid

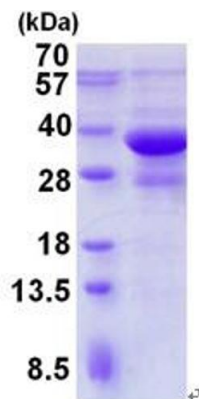
Concentration: 1 mg/ml (determined by Bradford assay)

Buffer: 20 mM Tris-HCl buffer (pH 8.0) containing 0.1 M NaCl, 10% glycerol, 2 mM DTT

Storage: 4 °C

Storage Comment: Avoid repeated freezing and thawing cycles.

Images



15% SDS-PAGE (3ug)

Image 1.