

Datasheet for ABIN1098478 **RWDD1 Protein (His tag)**



[Go to Product page](#)

1 Image

Overview

| | |
|-------------------------------|--|
| Quantity: | 50 µg |
| Target: | RWDD1 |
| Origin: | Human |
| Source: | Escherichia coli (E. coli) |
| Protein Type: | Recombinant |
| Purification tag / Conjugate: | This RWDD1 protein is labelled with His tag. |
| Application: | SDS-PAGE (SDS) |

Product Details

| | |
|---------------|----------------------------|
| Purification: | purified by chromatography |
| Purity: | > 85 % by SDS - PAGE |

Target Details

| | |
|-------------------|--|
| Target: | RWDD1 |
| Alternative Name: | RWDD1 (RWDD1 Products) |
| Background: | <p>RWDD1, also known as CGI-24 or PTD013, belongs to the RWDD1/GIR2 family. This protein protects DRG2 (developmentally regulated GTP binding protein 2), from proteolytic degradation. RWDD1 is a novel RWD domain containing protein. RWD domain refers to three signature motifs in proteins: RING finger, WD-repeats, and yeast DEAD (DEXD)-like motif. The function of this domain is not clear enough. Present evidence suggests that RWD domain might be necessary for protein-protein interaction. Recombinant human RWDD1 protein, fused to His-tag</p> |

Target Details

at N-terminus, was expressed in E.coli and purified by using conventional chromatography techniques.

Molecular Weight: 30.3kDa (266aa), confirmed by MALDI-TOF (Molecular size on SDS-PAGE will appear higher)

NCBI Accession: [NP_057036](#)

Application Details

Comment: Synonyms: RWD domain-containing protein 1, CGI-24, PTD013

Restrictions: For Research Use only

Handling

Format: Liquid

Concentration: 0.5 mg/ml (determined by Bradford assay)

Buffer: 20 mM Tris-HCl buffer (pH 8.0) containing 0.1 M NaCl, 10% glycerol, 2 mM DTT

Storage: 4 °C

Storage Comment: Avoid repeated freezing and thawing cycles.

Images

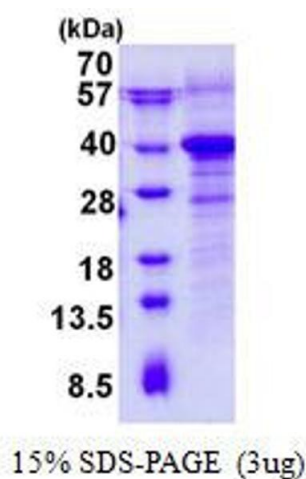


Image 1.