

Datasheet for ABIN1098488  
**BCL2L10 Protein (His tag)**[Go to Product page](#)

## 1 Image

## Overview

Quantity:	100 µg
Target:	BCL2L10
Origin:	Human
Source:	Escherichia coli (E. coli)
Protein Type:	Recombinant
Purification tag / Conjugate:	This BCL2L10 protein is labelled with His tag.
Application:	SDS-PAGE (SDS)

## Product Details

Purification:	purified by chromatography
Purity:	> 90 % by SDS - PAGE

## Target Details

Target:	BCL2L10
Alternative Name:	BCL2L10 ( <a href="#">BCL2L10 Products</a> )
Background:	BCL2L10 belongs to the BCL-2 protein family. BCL-2 family members form hetero- or homodimers and act as anti- or pro-apoptotic regulators that are involved in a wide variety of cellular activities. BCL2L10 contains conserved BH4, BH1 and BH2 domains. This protein can interact with other members of BCL-2 protein family including BCL2, BCL2L1/BCL-X(L), and BAX. Overexpression of this protein has been shown to suppress cell apoptosis possibly through the prevention of cytochrome C release from the mitochondria, and thus activating

## Target Details

	caspase-3 activation. Recombinant human BCL2L10 protein, fused to His-tag at N-terminus, was expressed in E.coli and purified by using conventional chromatography techniques.
Molecular Weight:	21.8 kDa (195aa), confirmed by MALDI-TOF
NCBI Accession:	<a href="#">NP_065129</a>
Pathways:	<a href="#">Positive Regulation of Endopeptidase Activity</a>

## Application Details

Comment:	Synonyms: Bcl-2-like protein 10, BCL-B, Boo, Diva
Restrictions:	For Research Use only

## Handling

Format:	Liquid
Concentration:	0.5 mg/ml (determined by Bradford assay)
Buffer:	20 mM Tris-HCl buffer (pH 8.0) containing 0.15 M NaCl, 20% glycerol, 1 MM DTT
Storage:	4 °C
Storage Comment:	Avoid repeated freezing and thawing cycles.

## Images

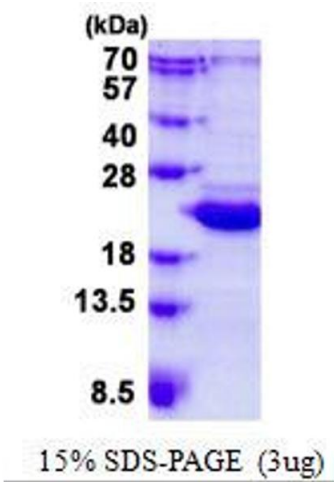


Image 1.