

Datasheet for ABIN1098505

**TBPL1 Protein (His tag)**[Go to Product page](#)**1** Image

## Overview

Quantity:	50 µg
Target:	TBPL1
Origin:	Human
Source:	Escherichia coli (E. coli)
Protein Type:	Recombinant
Purification tag / Conjugate:	This TBPL1 protein is labelled with His tag.
Application:	SDS-PAGE (SDS)

## Product Details

Purification:	purified by chromatography
Purity:	> 90 % by SDS - PAGE

## Target Details

Target:	TBPL1
Alternative Name:	TBPL1 ( <a href="#">TBPL1 Products</a> )
Background:	<p>TBPL1, also known as STUD, TLF, TLP and TRF2, belongs to the TBP family. The TATA box-binding protein (TBP) is an essential component of the basal transcriptional machinery. Initiation of transcription by RNA polymerase II requires the activities of more than 70 polypeptides. The protein that coordinates these activities is transcription factor IID (TFIID), which binds to the core promoter to position the polymerase properly, serves as the scaffold for assembly of the remainder of the transcription complex, and acts as a channel for regulatory</p>

## Target Details

signals. It is essential for spermiogenesis and believed to be important in expression of developmentally regulated genes. Recombinant human TBPL1 protein, fused to His-tag at N-terminus, was expressed in E.coli and purified by using conventional chromatography techniques.

Molecular Weight: 23.3kDa (209aa), confirmed by MALDI-TOF

NCBI Accession: [NP\\_004856](#)

## Application Details

Comment: Synonyms: TATA box-binding protein-like protein 1, MGC8389, MGC9620, STUD, TLF, TLP, TRF2

Restrictions: For Research Use only

## Handling

Format: Liquid

Concentration: 0.25 mg/ml (determined by Bradford assay)

Buffer: 20 mM Tris-HCl buffer (pH 8.0) containing 0.2 M NaCl, 50% glycerol, 2 mM DTT, 1 MM EDTA

Storage: 4 °C

Storage Comment: Avoid repeated freezing and thawing cycles.

## Images

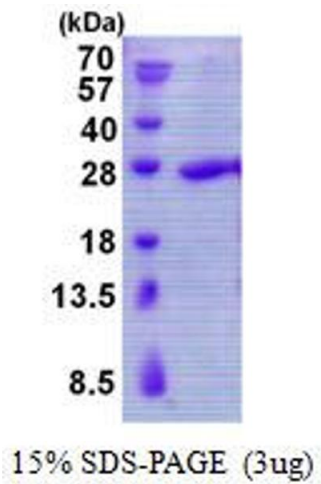


Image 1.