

Datasheet for ABIN1098556

SSR2 Protein (His tag)[Go to Product page](#)**1** Image

Overview

Quantity:	100 µg
Target:	SSR2
Origin:	Human
Source:	Escherichia coli (E. coli)
Protein Type:	Recombinant
Purification tag / Conjugate:	This SSR2 protein is labelled with His tag.
Application:	SDS-PAGE (SDS)

Product Details

Purification:	purified by chromatography
Purity:	> 90 % by SDS - PAGE

Target Details

Target:	SSR2
Alternative Name:	SSR2 (SSR2 Products)

Background: The signal sequence receptor (SSR) is a glycosylated endoplasmic reticulum (ER) membrane receptor associated with protein translocation across the ER membrane. The SSR consists of 2 subunits, a 34-kD glycoprotein (alpha-SSR or SSR1) and a 22-kD glycoprotein (beta-SSR or SSR2). The human beta-signal sequence receptor gene (SSR2) maps to chromosome bands 1q21-q23. Recombinant human SSR2 protein, fused to His-tag at N-terminus, was expressed in E.coli and purified by using conventional chromatography techniques.

Target Details

Molecular Weight: 16.8 kDa(155aa) confirmed by MALDI-TOF

NCBI Accession: [NP_003136](#)

Application Details

Comment: Synonyms: Tanslocon-associated protein subunit beta precursor, HSD25, TLAP, TRAP-BETA, TRAPB

Restrictions: For Research Use only

Handling

Format: Liquid

Concentration: 0.5 mg/ml (determined by Bradford assay)

Buffer: 20 mM Tris-HCl buffer (pH 8.0) containing 10% glycerol 0.1 M NaCl

Storage: 4 °C

Storage Comment: Avoid repeated freezing and thawing cycles.

Images

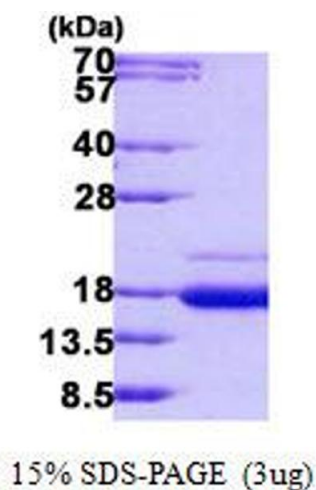


Image 1.