

Datasheet for ABIN1098564  
**GEMIN6 Protein (His tag)**



[Go to Product page](#)

1 Image

## Overview

Quantity:	50 µg
Target:	GEMIN6
Origin:	Human
Source:	Escherichia coli (E. coli)
Protein Type:	Recombinant
Purification tag / Conjugate:	This GEMIN6 protein is labelled with His tag.
Application:	SDS-PAGE (SDS)

## Product Details

Purification:	purified by chromatography
Purity:	> 90 % by SDS - PAGE

## Target Details

Target:	GEMIN6
Alternative Name:	GEMIN6 ( <a href="#">GEMIN6 Products</a> )
Background:	GEMIN6 is part of a large macromolecular complex, localized to both the cytoplasm and the nucleus, that plays a role in the cytoplasmic assembly of small nuclear ribonucleoproteins (snRNPs). Other members of this complex includes SMN, GEMIN2, GEMIN3, GEMIN4, and GEMIN5. Recombinant human GEMIN6 protein, fused to His-tag at N-terminus, was expressed in E.coli and purified by using conventional chromatography techniques.
Molecular Weight:	21.9 kDa (190aa) confirmed by MALDI-TOF

## Target Details

---

NCBI Accession: [NP\\_079051](#)

---

Pathways: [Ribonucleoprotein Complex Subunit Organization](#)

---

## Application Details

---

Comment: Synonyms: Gem-associated protein 6, FLJ23459, Gemin-6, SIP2

---

Restrictions: For Research Use only

---

## Handling

---

Format: Liquid

---

Concentration: 0.5 mg/ml (determined by Bradford assay)

---

Buffer: 20 mM Tris-HCl buffer (pH 8.0) containing 0.15 M NaCl, 30% glycerol, 1 mM DTT

---

Storage: 4 °C

---

Storage Comment: Avoid repeated freezing and thawing cycles.

---

## Images

---

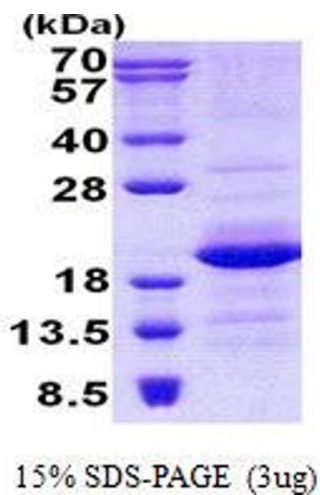


Image 1.