

Datasheet for ABIN1098637
UBE2M Protein (His tag)[Go to Product page](#)

1 Image

Overview

Quantity:	100 µg
Target:	UBE2M (ube2m)
Origin:	Human
Source:	Escherichia coli (E. coli)
Protein Type:	Recombinant
Purification tag / Conjugate:	This UBE2M protein is labelled with His tag.
Application:	SDS-PAGE (SDS)

Product Details

Purification:	purified by using conventional chromatography.
Purity:	> 95 % by SDS - PAGE

Target Details

Target:	UBE2M (ube2m)
Alternative Name:	UBE2M (ube2m Products)
Background:	UBE2M, also known as NEDD8-conjugating enzyme Ubc12, belongs to the ubiquitin-conjugating enzyme family. The modification of proteins with ubiquitin is an important cellular mechanism for targeting abnormal or short-lived proteins for degradation. Ubiquitination involves at least three classes of enzymes: ubiquitin-activating enzymes, or E1s, ubiquitin-conjugating enzymes, or E2s, and ubiquitin-protein ligases, or E3s. This gene encodes a member of the E2 ubiquitin-conjugating enzyme family. The encoded protein is linked with a ubiquitin-like protein, NEDD8,

Target Details

	which can be conjugated to cellular proteins, such as Cdc53/culin. Recombinant human UBE2M protein, fused to His-tag at N-terminus, was expressed in E.coli and purified by using conventional chromatography.
Molecular Weight:	23.5 kDa (207aa) confirmed by MALDI-TOF
NCBI Accession:	NP_003960

Application Details

Comment:	Synonyms: NEDD8-conjugating enzyme Ubc12, hUbc12, UBC-RS2, UBC12
Restrictions:	For Research Use only

Handling

Format:	Liquid
Concentration:	1 mg/ml (determined by Bradford assay)
Buffer:	20 mM Tris-HCl buffer (pH 8.0) containing 20% glycerol, 0.2 M NaCl, 1 MM DTT
Storage:	4 °C
Storage Comment:	Avoid repeated freezing and thawing cycles.

Images

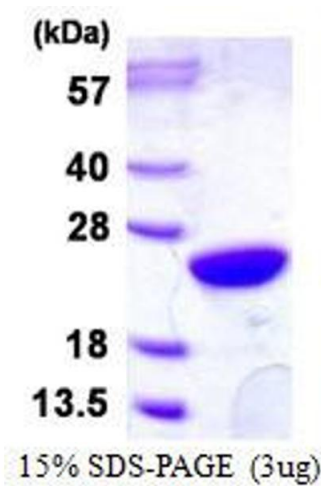


Image 1.