

Datasheet for ABIN1098654
ATOH1 Protein (His tag)



[Go to Product page](#)

1 Image

Overview

Quantity:	100 µg
Target:	ATOH1
Origin:	Human
Source:	Escherichia coli (E. coli)
Protein Type:	Recombinant
Purification tag / Conjugate:	This ATOH1 protein is labelled with His tag.
Application:	SDS-PAGE (SDS)

Product Details

Purity: > 85 % by SDS - PAGE

Target Details

Target:	ATOH1
Alternative Name:	ATOH1 (ATOH1 Products)
Background:	ATOH1, also known as protein atonal homolog 1, activates E box-dependent transcription in collaboration with TCF3/E47, but the activity is completely antagonized by the negative regulator of neurogenesis HES1. This protein may play a role in the differentiation of subsets of neural cells by activating E box-dependent transcription. Recombinant human ATOH1 protein, fused to His-tag at N-terminus, was expressed in E.coli.
Molecular Weight:	21.3 kDa (198aa)
NCBI Accession:	NP_005163

Application Details

Comment: Synonyms: Protein atonal homolog 1, ATH1, bHLHa14, HATH1, MATH-1

Restrictions: For Research Use only

Handling

Format: Liquid

Concentration: 1 mg/ml (determined by Bradford assay)

Buffer: 20 mM Tris-HCl buffer (pH 8.0) containing 10% glycerol, 0.4 M Urea

Storage: 4 °C

Storage Comment: Avoid repeated freezing and thawing cycles.

Images

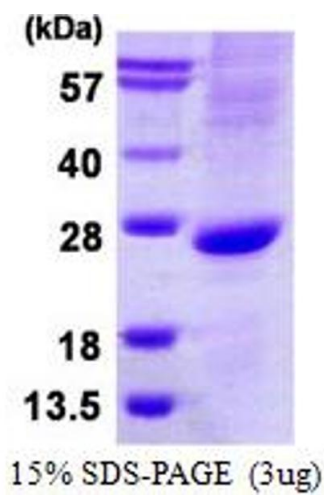


Image 1.