

Datasheet for ABIN1098661 **CRYGN Protein (His tag)**



[Go to Product page](#)

1 Image

Overview

Quantity:	100 µg
Target:	CRYGN
Origin:	Human
Source:	Escherichia coli (E. coli)
Protein Type:	Recombinant
Purification tag / Conjugate:	This CRYGN protein is labelled with His tag.
Application:	SDS-PAGE (SDS)

Product Details

Purity:	> 90 % by SDS - PAGE
---------	----------------------

Target Details

Target:	CRYGN
Alternative Name:	CRYGN (CRYGN Products)
Background:	Crystallin, gamma N, also known as CRYGN, belongs to the Crystallins family. Crystallins are divided into alpha, beta and gamma families, and the beta and gamma-crystallins also comprise a superfamily. Crystallins are the major proteins of the vertebrate eye lens, where they maintain the transparency and refractive index of the lens. The CRYGN is differentially regulated after early development, and are involved in cataract formation as a result of either age-related protein degradation or genetic mutation. Recombinant human CRYGN protein, fused to His-tag at N-terminus, was expressed in E.coli.

Target Details

Molecular Weight: 23.1 kDa (206aa)

NCBI Accession: [NP_653328](#)

Application Details

Comment: Synonyms: Crystallin, gamma N, gamma-crystallin N

Restrictions: For Research Use only

Handling

Format: Liquid

Concentration: 1 mg/ml (determined by Bradford assay)

Buffer: 20 mM Tris-HCl buffer (pH 8.0) containing 0.4 M Urea, 10% glycerol

Storage: 4 °C

Storage Comment: Avoid repeated freezing and thawing cycles.

Images

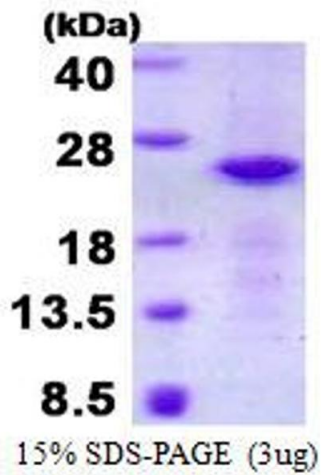


Image 1.