

Datasheet for ABIN1098662

Ephrin B3 Protein (EFNB3) (His tag)[Go to Product page](#)**1** Image

Overview

Quantity:	100 µg
Target:	Ephrin B3 (EFNB3)
Origin:	Human
Source:	Escherichia coli (E. coli)
Protein Type:	Recombinant
Purification tag / Conjugate:	This Ephrin B3 protein is labelled with His tag.
Application:	SDS-PAGE (SDS)

Product Details

Purity: > 90 % by SDS - PAGE

Target Details

Target:	Ephrin B3 (EFNB3)
Alternative Name:	EFNB3 (EFNB3 Products)
Background:	EFNB3, also known as ephrin-B3, a member of the ephrin gene family, is important in brain development as well as in its maintenance. It binds promiscuously Eph receptors residing on adjacent cells, leading to contact-dependent bidirectional signaling into neighboring cells. The signaling pathway downstream of the receptor is referred to as forward signaling while the signaling pathway downstream of the ephrin ligand is referred to as reverse signaling. Binds to, and induce the collapse of, commissural axons/growth cones in vitro. Recombinant human EFNB3 protein, fused to His-tag at N-terminus, was expressed in E.coli.

Target Details

Molecular Weight: 24.6 kDa (224aa)

NCBI Accession: [NP_001397](#)

Pathways: [RTK Signaling](#)

Application Details

Comment: Synonyms: Ephrin-B3, EFL6, EPLG8, LERK8

Restrictions: For Research Use only

Handling

Format: Liquid

Concentration: 1 mg/ml (determined by Bradford assay)

Buffer: 20 mM Tris-HCl buffer (pH 8.0) containing 20% glycerol, 0.1 M NaCl, 2 M Urea

Storage: 4 °C

Storage Comment: Avoid repeated freezing and thawing cycles.

Images

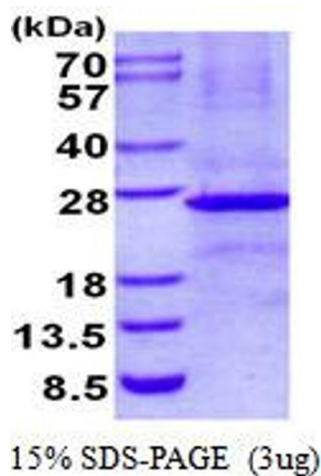


Image 1.