



[Go to Product page](#)

Datasheet for ABIN1098663
CSTF1 Protein (His tag)

1 Image

Overview

Quantity:	100 µg
Target:	CSTF1
Origin:	Human
Source:	Escherichia coli (E. coli)
Protein Type:	Recombinant
Purification tag / Conjugate:	This CSTF1 protein is labelled with His tag.
Application:	SDS-PAGE (SDS)

Product Details

Purity: > 90 % by SDS - PAGE

Target Details

Target:	CSTF1
Alternative Name:	CSTF1 (CSTF1 Products)
Background:	CSTF1, also known as cleavage stimulation factor subunit 1, is involved in the polyadenylation and 3'end cleavage of pre-mRNAs. Similar to mammalian G protein beta subunits, this protein contains transducin-like repeats. Several transcript variants with different 5' UTR, but encoding the same protein, have been found for this gene. Recombinant human CSTF1 protein, fused to His-tag at C-terminus, was expressed in E.coli.
Molecular Weight:	49.4 kDa (439aa)
NCBI Accession:	NP_001028693

Application Details

Comment: Synonyms: Cleavage stimulation factor subunit 1, CstF-50, CstFp50

Restrictions: For Research Use only

Handling

Format: Liquid

Concentration: 1 mg/ml (determined by Bradford assay)

Buffer: 20 mM Tris-HCl buffer (pH 8.0) containing 20% glycerol, 0.1 M NaCl, 2 M Urea

Storage: 4 °C

Storage Comment: Avoid repeated freezing and thawing cycles.

Images

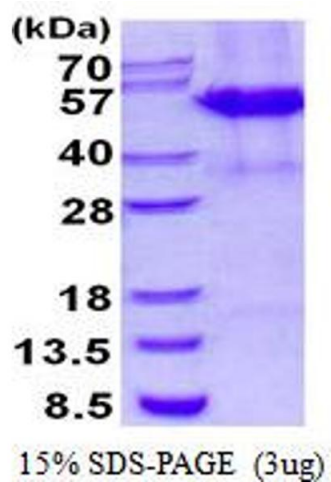


Image 1.