

Datasheet for ABIN1098668 **CD161 Protein (His tag)**



[Go to Product page](#)

1 Image

Overview

Quantity:	100 µg
Target:	CD161 (KLRB1)
Origin:	Human
Source:	Escherichia coli (E. coli)
Protein Type:	Recombinant
Purification tag / Conjugate:	This CD161 protein is labelled with His tag.
Application:	SDS-PAGE (SDS)

Product Details

Purity: > 85 % by SDS - PAGE

Target Details

Target:	CD161 (KLRB1)
Alternative Name:	KLRB1 (KLRB1 Products)
Background:	Killer cell lectin-like receptor subfamily B member 1, also known as KLRB1, plays an inhibitory role on natural killer (NK) cells cytotoxicity. Natural killer (NK) cells are lymphocytes that mediate cytotoxicity and secrete cytokines after immune stimulation. Several genes of the C-type lectin superfamily, including the rodent NKRP1 family of glycoproteins, are expressed by NK cells and may be involved in the regulation of NK cell function. The KLRB1 protein contains an extracellular domain with several motifs characteristic of C-type lectins, a transmembrane domain, and a cytoplasmic domain. The KLRB1 protein is classified as a type II membrane protein because it has an external C terminus. Recombinant human KLRB1 protein, fused to

Target Details

His-tag at N-terminus, was expressed in E.coli.

Molecular Weight: 21.0 kDa (183aa)

NCBI Accession: [NP_002249](#)

Application Details

Comment: Synonyms: Killer cell lectin-like receptor subfamily B member 1, p35-2, STX4A

Restrictions: For Research Use only

Handling

Format: Liquid

Concentration: 1 mg/ml (determined by Bradford assay)

Buffer: 20 mM Tris-HCl buffer (pH 8.0) containing 0.4 M urea, 10% glycerol

Storage: 4 °C

Storage Comment: Avoid repeated freezing and thawing cycles.

Images

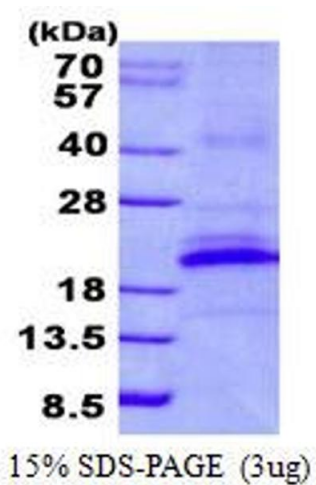


Image 1.