



[Go to Product page](#)

Datasheet for ABIN1098669

KLRC2 Protein (full length) (His tag)

1 Image

Overview

Quantity:	50 µg
Target:	KLRC2
Protein Characteristics:	full length
Origin:	Human
Source:	Escherichia coli (E. coli)
Protein Type:	Recombinant
Purification tag / Conjugate:	This KLRC2 protein is labelled with His tag.
Application:	SDS-PAGE (SDS)

Product Details

Purity:	> 85 % by SDS - PAGE
---------	----------------------

Target Details

Target:	KLRC2
Alternative Name:	KLRC2 (KLRC2 Products)
Background:	NKG2-C type II integral membrane protein, also known as KLRC2, plays a role as a receptor for the recognition of MHC class I HLA-E molecules by NK cells and some cytotoxic T-cells. The group, designated KLRC (NKG2) are expressed primarily in natural killer (NK) cells and encodes a family of transmembrane proteins characterized by a type II membrane orientation (extracellular C terminus) and the presence of a C-type lectin domain. The KLRC (NKG2) gene family is located within the NK complex, a region that contains several C-type lectin genes

Target Details

preferentially expressed on NK cells. KLRC2 alternative splice variants have been described but their full-length nature has not been determined. Recombinant human KLRC2 protein, fused to His-tag at N-terminus, was expressed in E.coli.

Molecular Weight: 18.4 kDa (162aa)

NCBI Accession: [NP_002251](#)

Application Details

Comment: Synonyms: NKG2-C type II integral membrane protein, CD159c, NKG2-C, NKG2C

Restrictions: For Research Use only

Handling

Format: Liquid

Concentration: 0.5 mg/ml (determined by Bradford assay)

Buffer: 20 mM Tris-HCl buffer (pH 8.0) containing 0.4 M urea, 10% glycerol

Storage: 4 °C

Storage Comment: Avoid repeated freezing and thawing cycles.

Images

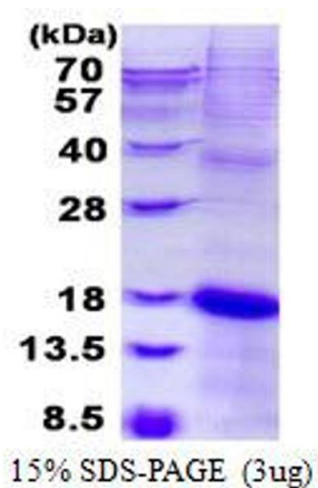


Image 1.