

Datasheet for ABIN1098677
SEC22B Protein (His tag)



[Go to Product page](#)

1 Image

Overview

Quantity:	100 µg
Target:	SEC22B
Origin:	Human
Source:	Escherichia coli (E. coli)
Protein Type:	Recombinant
Purification tag / Conjugate:	This SEC22B protein is labelled with His tag.
Application:	SDS-PAGE (SDS)

Product Details

Purity: > 90 % by SDS - PAGE

Target Details

Target:	SEC22B
Alternative Name:	SEC22B (SEC22B Products)
Background:	Vesicle-trafficking protein SEC22b precursor, also known as SEC22B, belongs to the synaptobrevin family. It seems to complex with SNARE and it is thought to play a role in the ER-Golgi protein trafficking. This protein has strong similarity to Mus musculus and Cricetulus griseus proteins. Recombinant human SEC22B protein, fused to His-tag at N-terminus, was expressed in E.coli.
Molecular Weight:	23.3 kDa (205aa)
NCBI Accession:	NP_004883

Application Details

Comment: Synonyms: Vesicle-trafficking protein SEC22b, ERS-24, SEC22L1

Restrictions: For Research Use only

Handling

Format: Liquid

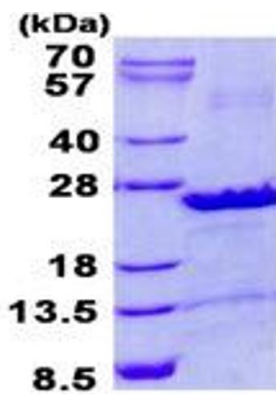
Concentration: 0.5 mg/ml (determined by Bradford assay)

Buffer: 20 mM Tris-HCl buffer (pH 8.0) containing 2 M Urea, 10% glycerol, 0.15 M NaCl

Storage: 4 °C

Storage Comment: Avoid repeated freezing and thawing cycles.

Images



15% SDS-PAGE (3ug)

Image 1.