

Datasheet for ABIN1098682
UQCRC2 Protein (His tag)



[Go to Product page](#)

1 Image

Overview

Quantity:	50 µg
Target:	UQCRC2
Origin:	Human
Source:	Escherichia coli (E. coli)
Protein Type:	Recombinant
Purification tag / Conjugate:	This UQCRC2 protein is labelled with His tag.
Application:	SDS-PAGE (SDS)

Product Details

Purity: > 85 % by SDS - PAGE

Target Details

Target:	UQCRC2
Alternative Name:	UQCRC2 (UQCRC2 Products)
Background:	Cytochrome b-c1 complex subunit 2, mitochondrial, also known as UQCRC2, belongs to the peptidase M16 family. This protein is a component of the ubiquinol-cytochrome c reductase complex (complex III), which is part of the mitochondrial respiratory chain. UQCRC2 is required for the assembly of the complex. Recombinant human UQCRC2 protein, fused to His-tag at N-terminus, was expressed in E.coli.
Molecular Weight:	49 kDa (460aa)
NCBI Accession:	NP_003357

Application Details

Comment: Synonyms: Cytochrome b-c1 complex subunit 2, mitochondrial, QCR2, UQCR2

Restrictions: For Research Use only

Handling

Format: Liquid

Concentration: 0.5 mg/ml (determined by Bradford assay)

Buffer: 20 mM Tris-HCl buffer (pH 8.0) containing 2 M Urea, 10% glycerol, 0.1 M NaCl

Storage: 4 °C

Storage Comment: Avoid repeated freezing and thawing cycles.

Images

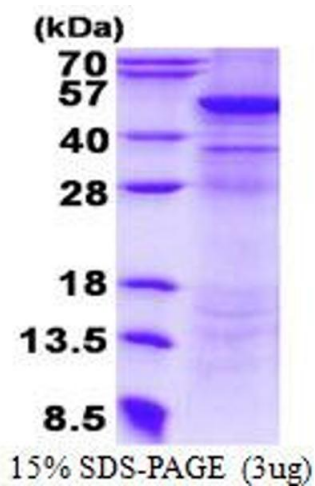


Image 1.