

Datasheet for ABIN1098691
KLRC3 Protein (His tag)[Go to Product page](#)**1** Image

Overview

Quantity:	100 µg
Target:	KLRC3
Origin:	Human
Source:	Escherichia coli (E. coli)
Protein Type:	Recombinant
Purification tag / Conjugate:	This KLRC3 protein is labelled with His tag.
Application:	SDS-PAGE (SDS)

Product Details

Purity:	> 90 % by SDS - PAGE
---------	----------------------

Target Details

Target:	KLRC3
Alternative Name:	KLRC3 (KLRC3 Products)
Background:	KLRC3 is a member of the NKG2 group which are expressed primarily in natural killer (NK) cells and encodes a family of transmembrane proteins characterized by a type II membrane orientation (extracellular C terminus) and the presence of a C-type lectin domain. The NKG2 gene family is located within the NK complex, a region that contains several C-type lectin genes preferentially expressed on NK cells. Recombinant human KLRC3 protein, fused to His-tag at N-terminus, was expressed in E.coli.
Molecular Weight:	19 kDa (171aa)

Target Details

NCBI Accession:

NP_002252

Application Details

Comment:

Synonyms: Killer cell lectin-like receptor subfamily C, NKG2-E, NKG2E

Restrictions:

For Research Use only

Handling

Format:

Liquid

Concentration:

1 mg/ml (determined by Bradford assay)

Buffer:

20 mM Tris-HCl buffer (pH 8.0) containing 0.4 M NaCl, 10% glycerol

Storage:

4 °C

Storage Comment:

Avoid repeated freezing and thawing cycles.

Images

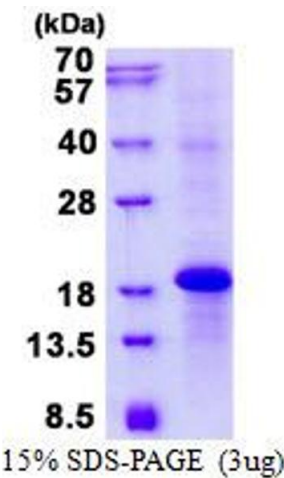


Image 1.