

Datasheet for ABIN1098703  
**SLAMF6 Protein (His tag)**



[Go to Product page](#)

1 Image

## Overview

Quantity:	100 µg
Target:	SLAMF6
Origin:	Human
Source:	Escherichia coli (E. coli)
Protein Type:	Recombinant
Purification tag / Conjugate:	This SLAMF6 protein is labelled with His tag.
Application:	SDS-PAGE (SDS)

## Product Details

Purity:	> 85 % by SDS - PAGE
---------	----------------------

## Target Details

Target:	SLAMF6
Alternative Name:	SLAMF6 ( <a href="#">SLAMF6 Products</a> )
Background:	SLAM family member 6, also known as SLAMF6, belongs to the SLAM family of immune cell receptors. SLAM is a novel receptor on T cells that, when engaged, potentiates T cell expansion in a CD28-independent manner. SLAMF6 is expressed on NK-, T-, and B cells. It exhibits homotypic interactions and can associate with adaptor molecules such as SAP to modulate immune cell functions. Recombinant human SLAMF6 protein, fused to His-tag at N-terminus, was expressed in E.coli.
Molecular Weight:	25.5 kDa (228aa)

## Target Details

---

NCBI Accession: [NP\\_001171643](#)

## Application Details

---

Comment: Synonyms: SLAM family member 6, CD352, KALI, KAL1b, Ly108, NTB-A, NTBA, SF2000

Restrictions: For Research Use only

## Handling

---

Format: Liquid

Concentration: 1 mg/ml (determined by Bradford assay)

Buffer: 20 mM Tris-HCl buffer (pH 8.0) containing 0.4 Urea, 10% glycerol

Storage: 4 °C

Storage Comment: Avoid repeated freezing and thawing cycles.

## Images

---

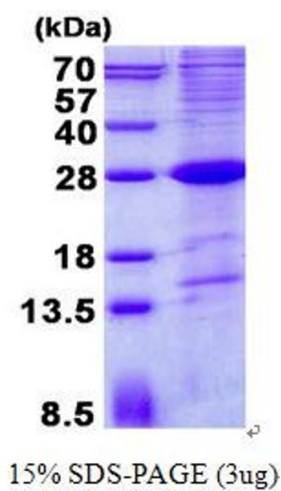


Image 1.