

Datasheet for ABIN1098704  
**RASSF1 Protein (His tag)**[Go to Product page](#)

## 1 Image

## Overview

Quantity:	100 µg
Target:	RASSF1
Origin:	Human
Source:	Escherichia coli (E. coli)
Protein Type:	Recombinant
Purification tag / Conjugate:	This RASSF1 protein is labelled with His tag.
Application:	SDS-PAGE (SDS)

## Product Details

Purity:	> 85 % by SDS - PAGE
---------	----------------------

## Target Details

Target:	RASSF1
Alternative Name:	RASSF1A ( <a href="#">RASSF1 Products</a> )
Background:	RASSF1A is similar to the RAS effector proteins. Loss or altered expression of this gene has been associated with the pathogenesis of a variety of cancers, which suggests the tumor suppressor function of this gene. The inactivation of this gene was found to be correlated with the hypermethylation of its CpG-island promoter region. This protein required for death receptor-dependent apoptosis. Recombinant human RASSF1A protein, fused to His-tag at N-terminus, was expressed in E.coli.
Molecular Weight:	42.9 kDa (376aa)

Target Details

NCBI Accession: [NP\\_009113](#)

Application Details

Comment:	Synonyms: Ras association domain-containing protein 1, 123F2, NORE2A, RASSF1, RDA32, REH3P21
Restrictions:	For Research Use only

Handling

Format:	Liquid
Concentration:	1 mg/ml (determined by Bradford assay)
Buffer:	20 mM Tris-HCl buffer (pH 8.0) containing 0.4 M Urea, 10% glycerol
Storage:	4 °C
Storage Comment:	Avoid repeated freezing and thawing cycles.

Images

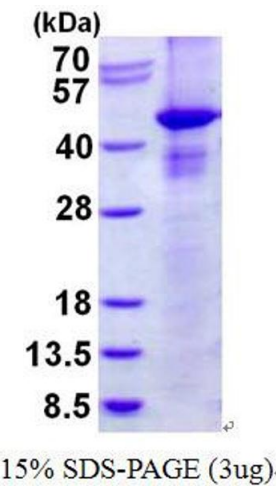


Image 1.