

Datasheet for ABIN1098708

**SSR4 Protein (His tag)**[Go to Product page](#)**1** Image

## Overview

Quantity:	100 µg
Target:	SSR4
Origin:	Human
Source:	Escherichia coli (E. coli)
Protein Type:	Recombinant
Purification tag / Conjugate:	This SSR4 protein is labelled with His tag.
Application:	SDS-PAGE (SDS)

## Product Details

Purity: > 90 % by SDS - PAGE

## Target Details

Target:	SSR4
Alternative Name:	SSR4 ( <a href="#">SSR4 Products</a> )
Background:	SSR4 is the delta subunit of the translocon-associated protein complex which is involved in translocating proteins across the endoplasmic reticulum membrane. The protein is located in the Xq28 region and is arranged in a compact head-to-head manner with the isocitrate dehydrogenase 3 (NAD <sup>+</sup> ) gamma gene and both genes are driven by a CpG-embedded bidirectional promoter. Alternate splicing results in multiple transcript variants. Recombinant human SSR4 protein, fused to His-tag at N-terminus, was expressed in E.coli.
Molecular Weight:	16.1 kDa (144aa)

## Target Details

---

NCBI Accession: [NP\\_006271](#)

## Application Details

---

Comment: Synonyms: Translocon-associated protein subunit delta, TRAPD

Restrictions: For Research Use only

## Handling

---

Format: Liquid

Concentration: 1 mg/ml (determined by Bradford assay)

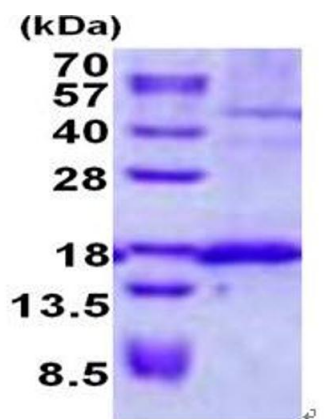
Buffer: 20 mM Tris-HCl buffer (pH 8.0) containing 0.4 M UREA, 10% glycerol

Storage: 4 °C

Storage Comment: Avoid repeated freezing and thawing cycles.

## Images

---



15% SDS-PAGE (3ug)

Image 1.