

Datasheet for ABIN1098712

IRGM Protein (His tag)[Go to Product page](#)**1** Image

Overview

| | |
|-------------------------------|---|
| Quantity: | 100 µg |
| Target: | IRGM |
| Origin: | Human |
| Source: | Escherichia coli (E. coli) |
| Protein Type: | Recombinant |
| Purification tag / Conjugate: | This IRGM protein is labelled with His tag. |
| Application: | SDS-PAGE (SDS) |

Product Details

| | |
|---------|----------------------|
| Purity: | > 90 % by SDS - PAGE |
|---------|----------------------|

Target Details

| | |
|-------------------|--|
| Target: | IRGM |
| Alternative Name: | IRGM (IRGM Products) |
| Background: | Immunity-related GTPase family M protein, also known as IRGM, is required for clearance of acute protozoan and bacterial infections. This protein functions in innate immune response probably through regulation of autophagy. It may regulate proinflammatory cytokine production and prevent endotoxemia upon infection and may also play a role in macrophages adhesion and motility. Recombinant human IRGM protein, fused to His-tag at N-terminus, was expressed in E.coli. |
| Molecular Weight: | 20.1 kDa (180aa) |

Target Details

NCBI Accession: [NP_001139277](#)

Application Details

Comment: Synonyms: Immunity-related GTPase family M protein, IFI1, IRGM1, LRG-47, LRG47, MGC149263, MGC149264

Restrictions: For Research Use only

Handling

Format: Liquid

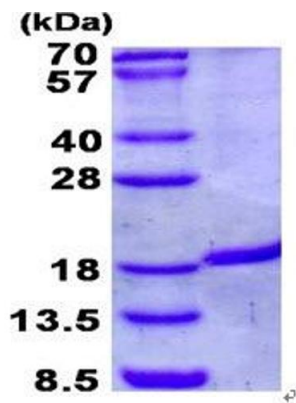
Concentration: 1 mg/ml (determined by Bradford assay)

Buffer: 20 mM Tris-HCl buffer (pH 8.0) containing 2 M Urea, 10% glycerol

Storage: 4 °C

Storage Comment: Avoid repeated freezing and thawing cycles.

Images



15% SDS-PAGE (3ug)

Image 1.