



Datasheet for ABIN1098722 HFE Protein (His tag)



[Go to Product page](#)

1 Image

Overview

Quantity:	100 µg
Target:	HFE
Origin:	Human
Source:	Escherichia coli (E. coli)
Protein Type:	Recombinant
Purification tag / Conjugate:	This HFE protein is labelled with His tag.
Application:	SDS-PAGE (SDS)

Product Details

Purity: > 85 % by SDS - PAGE

Target Details

Target: HFE

Alternative Name: HFE ([HFE Products](#))

Background: HFE, also known as HLA-H, belongs to the MHC class I family. This protein contains 1 Ig-like C1-type (immunoglobulin-like) domain. HFE is a membrane protein that is similar to MHC class I-type proteins and associates with beta-2 microglobulin (beta2M). It is thought that this protein functions to regulate iron absorption by regulating the interaction of the transferrin receptor (TFR) with transferrin. It binds to transferrin receptor (TFR) and reduces its affinity for iron-loaded transferrin. Recombinant human HFE protein, fused to His-tag at N-terminus, was expressed in E.coli.

Target Details

Molecular Weight: 35.7kDa (308aa)

NCBI Accession: [NP_000401](#)

Pathways: [Transition Metal Ion Homeostasis](#), [Regulation of Leukocyte Mediated Immunity](#), [Positive Regulation of Immune Effector Process](#)

Application Details

Comment: Synonyms: Hereditary hemochromatosis protein, HFE1, HH, HLA-H, MVCD7, TFQTL2

Restrictions: For Research Use only

Handling

Format: Liquid

Concentration: 1 mg/ml (determined by Bradford assay)

Buffer: 20 mM Tris-HCl buffer (pH 8.0) containing 0.4 M Urea, 10% glycerol

Storage: 4 °C

Storage Comment: Avoid repeated freezing and thawing cycles.

Images

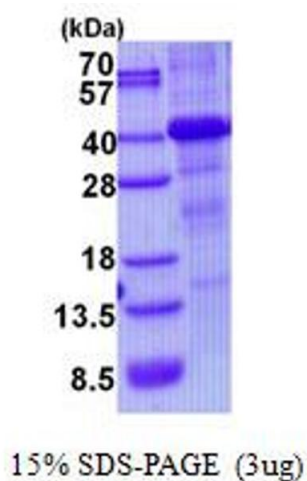


Image 1.