

Datasheet for ABIN1098733

**KLRG1 Protein (His tag)****1** Image[Go to Product page](#)

## Overview

Quantity:	50 µg
Target:	KLRG1
Origin:	Human
Source:	Escherichia coli (E. coli)
Protein Type:	Recombinant
Purification tag / Conjugate:	This KLRG1 protein is labelled with His tag.
Application:	SDS-PAGE (SDS)

## Product Details

Purity:	> 85 % by SDS - PAGE
---------	----------------------

## Target Details

Target:	KLRG1
Alternative Name:	KLRG1 ( <a href="#">KLRG1 Products</a> )
Background:	<p>KLRG1 belongs to the killer cell lectin-like receptor (KLR) family, which is a group of transmembrane proteins preferentially expressed in NK cells. Natural killer (NK) cells are lymphocytes that can mediate lysis of certain tumor cells and virus-infected cells without previous activation. They can also regulate specific humoral and cell-mediated immunity. Cell surface expression of KLRG1 is up-regulated by expression of MHC class I molecules.</p> <p>Recombinant human KLRG1 protein, fused to His-tag at N-terminus, was expressed in E.coli.</p>
Molecular Weight:	17kDa (153aa)

Target Details

NCBI Accession: [NP\\_005801](#)

Application Details

Comment:	Synonyms: Killer cell lectin-like receptor subfamily G member 1, 2F1, CLEC15A, MAFA, MAFA-2F1, MAFA-L, MAFA-LIKE
Restrictions:	For Research Use only

Handling

Format:	Liquid
Concentration:	0.5 mg/ml (determined by Bradford assay)
Buffer:	20 mM Tris-HCl buffer (pH 8.0) containing 0.4 M Urea, 10% glycerol
Storage:	4 °C
Storage Comment:	Avoid repeated freezing and thawing cycles.

Images

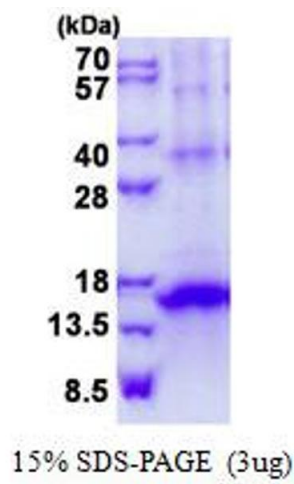


Image 1.