

Datasheet for ABIN1098744

**CLEC2B Protein (full length) (His tag)**[Go to Product page](#)**1** Image

## Overview

Quantity:	100 µg
Target:	CLEC2B
Protein Characteristics:	full length
Origin:	Human
Source:	Escherichia coli (E. coli)
Protein Type:	Recombinant
Purification tag / Conjugate:	This CLEC2B protein is labelled with His tag.
Application:	SDS-PAGE (SDS)

## Product Details

Purity:	> 90 % by SDS - PAGE
---------	----------------------

## Target Details

Target:	CLEC2B
Alternative Name:	CLEC2B ( <a href="#">CLEC2B Products</a> )
Background:	<p>CLEC2B is a member of the C-type lectin/C-type lectin-like domain (CTL/CTLD) superfamily. Members of this family share a common protein fold and have diverse functions, such as cell adhesion, cell-cell signalling, glycoprotein turnover, and roles in inflammation and immune response. The type 2 transmembrane protein may function as a cell activation antigen. An alternative splice variant has been described but its full-length sequence has not been determined. This gene is closely linked to other CTL/CTLD superfamily members on</p>

Target Details

	chromosome 12p13 in the natural killer gene complex region. Recombinant human CLEC2B protein, fused to His-tag at N-terminus, was expressed in E.coli.
Molecular Weight:	16.9kDa (147aa)
NCBI Accession:	<a href="#">NP_005118</a>

Application Details

Comment:	Synonyms: C-type lectin domain family 2 member B, AICL, CLECSF2, HP10085, IFNRG1
Restrictions:	For Research Use only

Handling

Format:	Liquid
Concentration:	1 mg/ml (determined by Bradford assay)
Buffer:	20 mM Tris-HCl buffer (pH 8.0) containing 2 M Urea, 10% glycerol
Storage:	4 °C
Storage Comment:	Avoid repeated freezing and thawing cycles.

Images

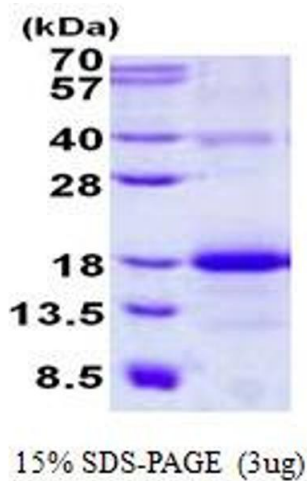


Image 1.